

# Ferritin HC

Mouse Monoclonal antibody(Mab)

Catalog # AD80161

## Product Information

---

Application	IHC-P
Primary Accession	<a href="#">P02794</a>
Reactivity	Human
Host	Mouse
Clonality	Monoclonal
Clone Names	882E5H9
Calculated MW	21226

## Additional Information

---

Gene ID	2495
Gene Name	FTH1
Other Names	Ferritin heavy chain, Ferritin H subunit, 1.16.3.1, Cell proliferation-inducing gene 15 protein, Ferritin heavy chain, N-terminally processed, FTH1, FTH, FTHL6
Dilution	IHC-P~~Ready-to-use
Storage	Maintain refrigerated at 2-8°C.
Precautions	Ferritin HC Antibody is for research use only and not for use in diagnostic or therapeutic procedures.

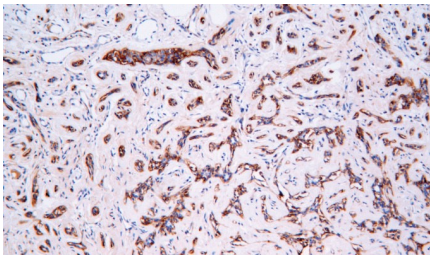
## Protein Information

---

Name	FTH1
Synonyms	FTH, FTHL6
Function	Stores iron in a soluble, non-toxic, readily available form. Important for iron homeostasis. Has ferroxidase activity (PubMed: <a href="#">9003196</a> ). Iron is taken up in the ferrous form and deposited as ferric hydroxides after oxidation (PubMed: <a href="#">9003196</a> ). Also plays a role in delivery of iron to cells (By similarity). Mediates iron uptake in capsule cells of the developing kidney (By similarity). Delivery to lysosomes is mediated by the cargo receptor NCOA4 for autophagic degradation and release of iron (PubMed: <a href="#">24695223</a> , PubMed: <a href="#">26436293</a> ).
Cellular Location	Cytoplasm. Lysosome. Cytoplasmic vesicle, autophagosome
Tissue Location	Expressed in the liver.

## Images

---



正常乳腺

Please note: All products are 'FOR RESEARCH USE ONLY. NOT FOR USE IN DIAGNOSTIC OR THERAPEUTIC PROCEDURES'.