

FSH

Mouse Monoclonal antibody(Mab)

Catalog # AD80165

Product Information

Application	IHC-P
Primary Accession	P23945
Reactivity	Human
Host	Mouse
Clonality	Monoclonal
Clone Names	265F3G3
Calculated MW	78238

Additional Information

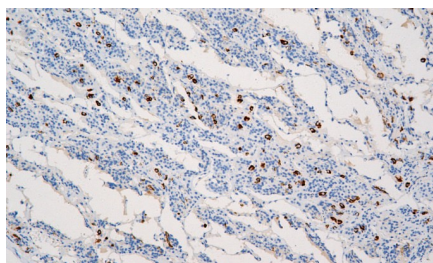
Gene ID	2492
Gene Name	FSHR
Other Names	Follicle-stimulating hormone receptor, FSH-R, Follitropin receptor, FSHR, LGR1
Dilution	IHC-P~~Ready-to-use
Storage	Maintain refrigerated at 2-8°C.
Precautions	FSH Antibody is for research use only and not for use in diagnostic or therapeutic procedures.

Protein Information

Name	FSHR
Synonyms	LGR1
Function	G protein-coupled receptor for follitropin, the follicle- stimulating hormone (PubMed: 11847099 , PubMed: 24058690 , PubMed: 24692546). Through cAMP production activates the downstream PI3K-AKT and ERK1/ERK2 signaling pathways (PubMed: 24058690).
Cellular Location	Cell membrane; Multi-pass membrane protein
Tissue Location	Sertoli cells and ovarian granulosa cells.

Images

垂体



Please note: All products are 'FOR RESEARCH USE ONLY. NOT FOR USE IN DIAGNOSTIC OR THERAPEUTIC PROCEDURES'.