

CK5&6

Mouse Monoclonal antibody(Mab)

Catalog # AD80169

Product Information

Application	IHC-P
Primary Accession	P13647
Reactivity	Human
Host	Mouse
Clonality	Monoclonal
Clone Names	258A7D1
Calculated MW	62378

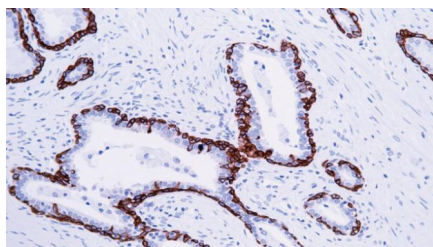
Additional Information

Gene ID	3852
Gene Name	KRT5
Other Names	Keratin, type II cytoskeletal 5, 58 kDa cytokeratin, Cytokeratin-5, CK-5, Keratin-5, K5, Type-II keratin Kb5, KRT5
Dilution	IHC-P~~Ready-to-use
Storage	Maintain refrigerated at 2-8°C.
Precautions	CK5&6 Antibody is for research use only and not for use in diagnostic or therapeutic procedures.

Protein Information

Name	KRT5
Function	Required for the formation of keratin intermediate filaments in the basal epidermis and maintenance of the skin barrier in response to mechanical stress (By similarity). Regulates the recruitment of Langerhans cells to the epidermis, potentially by modulation of the abundance of macrophage chemotactic cytokines, macrophage inflammatory cytokines and CTNND1 localization in keratinocytes (By similarity).
Cellular Location	Cytoplasm.
Tissue Location	Expressed in corneal epithelium (at protein level) (PubMed:26758872). Expressed in keratinocytes (at protein level) (PubMed:20128788, PubMed:31302245).

Images



Please note: All products are 'FOR RESEARCH USE ONLY. NOT FOR USE IN DIAGNOSTIC OR THERAPEUTIC PROCEDURES'.