

# SATB2

Rabbit Monoclonal antibody(Mab)

Catalog # AD80202

## Product Information

---

Application	IHC-P
Primary Accession	<a href="#">Q9UPW6</a>
Reactivity	Human
Host	Rabbit
Clonality	Monoclonal
Clone Names	355B6F2
Calculated MW	82555

## Additional Information

---

Gene ID	23314
Gene Name	SATB2
Other Names	DNA-binding protein SATB2, Special AT-rich sequence-binding protein 2, SATB2, KIAA1034
Dilution	IHC-P~~Ready-to-use
Storage	Maintain refrigerated at 2-8°C.
Precautions	SATB2 Antibody is for research use only and not for use in diagnostic or therapeutic procedures.

## Protein Information

---

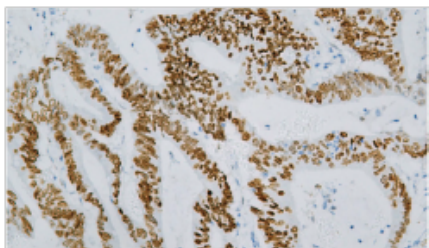
Name	SATB2
Synonyms	KIAA1034
Function	Binds to DNA, at nuclear matrix- or scaffold-associated regions. Thought to recognize the sugar-phosphate structure of double- stranded DNA. Transcription factor controlling nuclear gene expression, by binding to matrix attachment regions (MARs) of DNA and inducing a local chromatin-loop remodeling. Acts as a docking site for several chromatin remodeling enzymes and also by recruiting corepressors (HDACs) or coactivators (HATs) directly to promoters and enhancers. Required for the initiation of the upper-layer neurons (UL1) specific genetic program and for the inactivation of deep-layer neurons (DL) and UL2 specific genes, probably by modulating BCL11B expression. Repressor of Ctif2 and regulatory determinant of corticocortical connections in the developing cerebral cortex. May play an important role in palate formation. Acts as a molecular node in a transcriptional network regulating skeletal development and osteoblast differentiation.
Cellular Location	Nucleus matrix {ECO:0000255   PROSITE- ProRule:PRU00108, ECO:0000255   PROSITE-ProRule:PRU00374, ECO:0000269   PubMed:14701874}

**Tissue Location**

High expression in adult brain, moderate expression in fetal brain, and weak expression in adult liver, kidney, and spinal cord and in select brain regions, including amygdala, corpus callosum, caudate nucleus, and hippocampus.

**Images**

---



结肠癌

Please note: All products are 'FOR RESEARCH USE ONLY. NOT FOR USE IN DIAGNOSTIC OR THERAPEUTIC PROCEDURES'.