

## CDX-2

Rabbit Monoclonal antibody(Mab)

Catalog # AD80207

### Product Information

---

Application	IHC-P
Primary Accession	<a href="#">Q99626</a>
Reactivity	Human
Host	Rabbit
Clonality	Monoclonal
Clone Names	353G7A8
Calculated MW	33520

### Additional Information

---

Gene ID	1045
Gene Name	CDX2
Other Names	Homeobox protein CDX-2, CDX-3, Caudal-type homeobox protein 2, CDX2, CDX3
Dilution	IHC-P~~Ready-to-use
Storage	Maintain refrigerated at 2-8°C.
Precautions	CDX-2 Antibody is for research use only and not for use in diagnostic or therapeutic procedures.

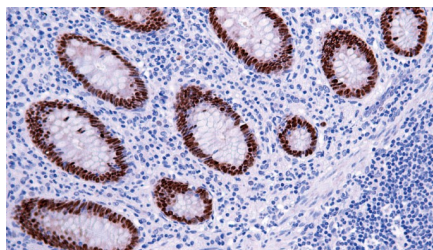
### Protein Information

---

Name	CDX2
Synonyms	CDX3
Function	Transcription factor which regulates the transcription of multiple genes expressed in the intestinal epithelium (By similarity). Binds to the promoter of the intestinal sucrase-isomaltase SI and activates SI transcription (By similarity). Binds to the DNA sequence 5'-ATAAAAACTTAT-3' in the promoter region of VDR and activates VDR transcription (By similarity). Binds to and activates transcription of LPH (By similarity). Activates transcription of CLDN2 and intestinal mucin MUC2 (By similarity). Binds to the 5'-AATTTTTCACACCT-3' DNA sequence in the promoter region of CA1 and activates CA1 transcription (By similarity). Important in broad range of functions from early differentiation to maintenance of the intestinal epithelial lining of both the small and large intestine. Binds preferentially to methylated DNA (PubMed: <a href="#">28473536</a> ).
Cellular Location	Nucleus {ECO:0000250 UniProtKB:P43241}.
Tissue Location	Detected in small intestine, colon and pancreas.

## Images

---



结肠癌

Please note: All products are 'FOR RESEARCH USE ONLY. NOT FOR USE IN DIAGNOSTIC OR THERAPEUTIC PROCEDURES'.