

CD21

Rabbit Monoclonal antibody(Mab)

Catalog # AD80208

Product Information

Application	IHC-P
Primary Accession	P20023
Reactivity	Human
Host	Rabbit
Clonality	Monoclonal
Clone Names	189G6E3
Calculated MW	112916

Additional Information

Gene ID	1380
Gene Name	CR2
Other Names	Complement receptor type 2, Cr2, Complement C3d receptor, Epstein-Barr virus receptor, EBV receptor, CD21, CR2, C3DR
Dilution	IHC-P~~Ready-to-use
Storage	Maintain refrigerated at 2-8°C.
Precautions	CD21 Antibody is for research use only and not for use in diagnostic or therapeutic procedures.

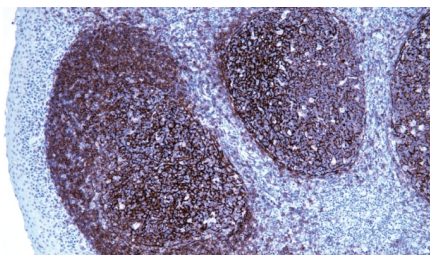
Protein Information

Name	CR2
Synonyms	C3DR
Function	Serves as a receptor for various ligands including complement component CD3d, HNRNPU OR IFNA1 (PubMed: 1849076 , PubMed: 21527715 , PubMed: 7753047). When C3d is bound to antigens, attaches to C3d on B- cell surface and thereby facilitates the recognition and uptake of antigens by B-cells (PubMed: 21527715). This interaction enhances B-cell activation and subsequent immune responses. Forms a complex with several partners on the surface of B-cells including CD19, FCRL5 and CD81, to form the B-cell coreceptor complex that plays a crucial role in B-cell activation and signaling (PubMed: 1383329 , PubMed: 30107486). Also induces specific intracellular signaling separately from the BCR and CD19 by activating the tyrosine kinase SRC, which then phosphorylates nucleolin/NCL and triggers AKT and GSK3 kinase activities in a SYK/CD19-independent manner (PubMed: 12938232). Acts as a ligand for CD23 (FcepsilonRII), a low-affinity receptor for IgE, which is expressed on B-cells and other immune cells, and thus participates in the regulation of IgE production (PubMed: 1386409).

Cellular Location
Tissue Location

Cell membrane; Single-pass type I membrane protein
Mature B-lymphocytes, T-lymphocytes, pharyngeal epithelial cells, astrocytes and follicular dendritic cells of the spleen

Images



扁桃體

Please note: All products are 'FOR RESEARCH USE ONLY. NOT FOR USE IN DIAGNOSTIC OR THERAPEUTIC PROCEDURES'.