

## c-KIT/CD117抗体试剂(免疫组织化学)

Rabbit Monoclonal Antibody (Mab)

Catalog # AD80217

### Product Information

---

Application	IHC
Primary Accession	<a href="#">P10721</a>
Reactivity	Human
Host	Rabbit
Clonality	Monoclonal
Clone Names	990G7E5
Calculated MW	109865

### Additional Information

---

Gene ID	3815
Gene Name	KIT
Other Names	Mast/stem cell growth factor receptor Kit, SCFR, 2.7.10.1, Piebald trait protein, PBT, Proto-oncogene c-Kit, Tyrosine-protein kinase Kit, p145 c-kit, v-kit Hardy-Zuckerman 4 feline sarcoma viral oncogene homolog, CD117, KIT, SCFR
Dilution	IHC~~1:100
Storage	Maintain refrigerated at 2-8°C.
Precautions	c-KIT/CD117 Antibody is for research use only and not for use in diagnostic or therapeutic procedures.

### Protein Information

---

Name	KIT
Synonyms	SCFR
Function	<p>Tyrosine-protein kinase that acts as a cell-surface receptor for the cytokine KITLG/SCF and plays an essential role in the regulation of cell survival and proliferation, hematopoiesis, stem cell maintenance, gametogenesis, mast cell development, migration and function, and in melanogenesis. In response to KITLG/SCF binding, KIT can activate several signaling pathways. Phosphorylates PIK3R1, PLCG1, SH2B2/APS and CBL. Activates the AKT1 signaling pathway by phosphorylation of PIK3R1, the regulatory subunit of phosphatidylinositol 3-kinase. Activated KIT also transmits signals via GRB2 and activation of RAS, RAF1 and the MAP kinases MAPK1/ERK2 and/or MAPK3/ERK1. Promotes activation of STAT family members STAT1, STAT3, STAT5A and STAT5B. Activation of PLCG1 leads to the production of the cellular signaling molecules diacylglycerol and inositol 1,4,5- trisphosphate. KIT signaling is modulated by protein phosphatases, and by rapid internalization and degradation of the receptor. Activated KIT promotes</p>

phosphorylation of the protein phosphatases PTPN6/SHP-1 and PTPRU, and of the transcription factors STAT1, STAT3, STAT5A and STAT5B. Promotes phosphorylation of PIK3R1, CBL, CRK (isoform Crk-II), LYN, MAPK1/ERK2 and/or MAPK3/ERK1, PLCG1, SRC and SHC1.

**Cellular Location**

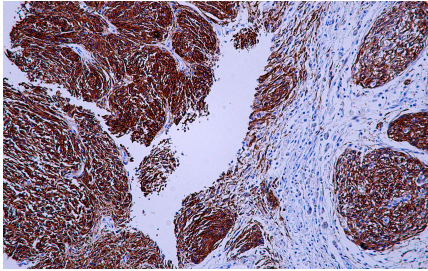
[Isoform 1]: Cell membrane; Single-pass type I membrane protein [Isoform 3]: Cytoplasm. Note=Detected in the cytoplasm of spermatozoa, especially in the equatorial and subacrosomal region of the sperm head.

**Tissue Location**

[Isoform 3]: In testis, detected in spermatogonia in the basal layer and in interstitial Leydig cells but not in Sertoli cells or spermatocytes inside the seminiferous tubules (at protein level) (PubMed:20601678). Expression is maintained in ejaculated spermatozoa (at protein level) (PubMed:20601678)

## Images

---



Immunohistochemical analysis of paraffin-embedded gastrointestinal stromal tumor tissue using AD80217 performed on the Abcarta® FAIP-48 Fully automated IHC platform. Tissue was fixed with formaldehyde at room temperature, antigen retrieval was by heat mediation with a Citrate buffer (pH6. 0). Samples were incubated with primary antibody for 15 min at room temperature. AmpSee™ Detection Systems (Abcepta: ADR005) was used as the secondary antibody.

Please note: All products are 'FOR RESEARCH USE ONLY. NOT FOR USE IN DIAGNOSTIC OR THERAPEUTIC PROCEDURES'.