

# CK6

Rabbit Monoclonal antibody(Mab)  
Catalog # AD80226

## Product Information

Application	IHC-P
Primary Accession	<a href="#">P48668</a>
Reactivity	Human
Host	Rabbit
Clonality	Monoclonal
Clone Names	564G2D3
Calculated MW	60025

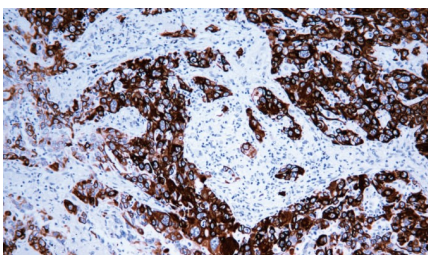
## Additional Information

Gene ID	286887
Gene Name	KRT6C
Other Names	Keratin, type II cytoskeletal 6C, Cytokeratin-6C, CK-6C, Cytokeratin-6E, CK-6E, Keratin K6h, Keratin-6C, K6C, Type-II keratin Kb12, KRT6C, KRT6E
Dilution	IHC-P~~Ready-to-use
Storage	Maintain refrigerated at 2-8°C.
Precautions	CK6 Antibody is for research use only and not for use in diagnostic or therapeutic procedures.

## Protein Information

Name	KRT6C
Synonyms	KRT6E
Tissue Location	Constitutively expressed in distinct types of epithelia such as those in oral mucosa, esophagus, papillae of tongue and hair follicle outer root sheath

## Images



肺腺癌

Please note: All products are 'FOR RESEARCH USE ONLY. NOT FOR USE IN DIAGNOSTIC OR THERAPEUTIC PROCEDURES'.