

melan A

Mouse Monoclonal antibody(Mab)

Catalog # AD80231

Product Information

Application	IHC-P
Primary Accession	Q16655
Reactivity	Human
Host	Mouse
Clonality	Monoclonal
Clone Names	134H9E9
Calculated MW	13157

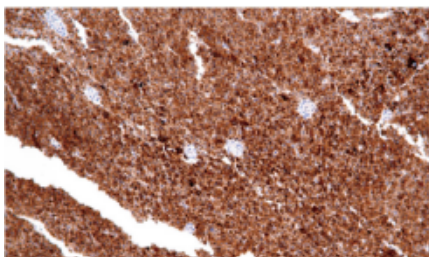
Additional Information

Gene ID	2315
Gene Name	MLANA
Other Names	Melanoma antigen recognized by T-cells 1, MART-1, Antigen LB39-AA, Antigen SK29-AA, Protein Melan-A, MLANA, MART1
Dilution	IHC-P~~Ready-to-use
Storage	Maintain refrigerated at 2-8°C.
Precautions	MART-1/melan A Antibody is for research use only and not for use in diagnostic or therapeutic procedures.

Protein Information

Name	MLANA
Synonyms	MART1
Function	Involved in melanosome biogenesis by ensuring the stability of GPR143. Plays a vital role in the expression, stability, trafficking, and processing of melanocyte protein PMEL, which is critical to the formation of stage II melanosomes.
Cellular Location	Endoplasmic reticulum membrane; Single-pass type III membrane protein. Golgi apparatus. Golgi apparatus, trans-Golgi network membrane. Melanosome. Note=Also found in small vesicles and tubules dispersed over the entire cytoplasm. A small fraction of the protein is inserted into the membrane in an inverted orientation Inversion of membrane topology results in the relocalization of the protein from a predominant Golgi/post-Golgi area to the endoplasmic reticulum. Melanoma cells expressing the protein with an inverted membrane topology are more effectively recognized by specific cytolytic T-lymphocytes than those expressing the protein in its native membrane orientation
Tissue Location	Expression is restricted to melanoma and melanocyte cell lines and retina

Images



恶性黑色素瘤

Please note: All products are 'FOR RESEARCH USE ONLY. NOT FOR USE IN DIAGNOSTIC OR THERAPEUTIC PROCEDURES'.