

Langerin

Rabbit Monoclonal antibody(Mab)

Catalog # AD80237

Product Information

Application	IHC-P
Primary Accession	Q9UJ71
Reactivity	Human
Host	Rabbit
Clonality	Monoclonal
Clone Names	878B5E3
Calculated MW	36725

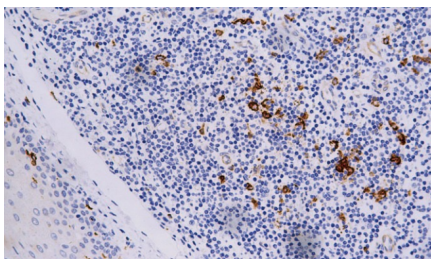
Additional Information

Gene ID	50489
Gene Name	CD207
Other Names	C-type lectin domain family 4 member K, Langerin, CD207, CD207, CLEC4K
Dilution	IHC-P~~Ready-to-use
Storage	Maintain refrigerated at 2-8°C.
Precautions	Langerin Antibody is for research use only and not for use in diagnostic or therapeutic procedures.

Protein Information

Name	CD207
Synonyms	CLEC4K
Function	Calcium-dependent lectin displaying mannose-binding specificity. Induces the formation of Birbeck granules (BGs); is a potent regulator of membrane superimposition and zippering. Binds to sulfated as well as mannosylated glycans, keratan sulfate (KS) and beta-glucans. Facilitates uptake of antigens and is involved in the routing and/or processing of antigen for presentation to T cells. Major receptor on primary Langerhans cells for Candida species, Saccharomyces species, and Malassezia furfur. Protects against human immunodeficiency virus-1 (HIV-1) infection. Binds to high-mannose structures present on the envelope glycoprotein which is followed by subsequent targeting of the virus to the Birbeck granules leading to its rapid degradation.
Cellular Location	Membrane; Single- pass type II membrane protein. Note=Found in Birbeck granules (BGs), which are organelles consisting of superimposed and zippered membranes
Tissue Location	Exclusively expressed by Langerhans cells. Expressed in astrocytoma and malignant ependymoma, but not in normal brain tissues.

Images



扁桃体

Please note: All products are 'FOR RESEARCH USE ONLY. NOT FOR USE IN DIAGNOSTIC OR THERAPEUTIC PROCEDURES'.