

FOX A1 Antibody

Mouse Monoclonal Antibody (Mab)

Catalog # AD80238

Product Information

Application	IHC
Primary Accession	P55317
Reactivity	Human
Host	Mouse
Clonality	Monoclonal
Clone Names	906E3C2
Calculated MW	49148

Additional Information

Gene ID	3169
Gene Name	FOXA1
Other Names	Hepatocyte nuclear factor 3-alpha, HNF-3-alpha, HNF-3A, Forkhead box protein A1, Transcription factor 3A, TCF-3A, FOXA1, HNF3A, TCF3A
Dilution	IHC~~Ready-to-use
Storage	Maintain refrigerated at 2-8°C.
Precautions	FOX A1 Antibody is for research use only and not for use in diagnostic or therapeutic procedures.

Protein Information

Name	FOXA1
Synonyms	HNF3A, TCF3A
Function	Transcription factor that is involved in embryonic development, establishment of tissue-specific gene expression and regulation of gene expression in differentiated tissues. Is thought to act as a 'pioneer' factor opening the compacted chromatin for other proteins through interactions with nucleosomal core histones and thereby replacing linker histones at target enhancer and/or promoter sites. Binds DNA with the consensus sequence 5'- [AC]A[AT]T[AG]TT[GT][AG][CT]T[CT]-3' (By similarity). Proposed to play a role in translating the epigenetic signatures into cell type-specific enhancer-driven transcriptional programs. Its differential recruitment to chromatin is dependent on distribution of histone H3 methylated at 'Lys-5' (H3K4me2) in estrogen-regulated genes. Involved in the development of multiple endoderm-derived organ systems such as liver, pancreas, lung and prostate; FOXA1 and FOXA2 seem to have at least in part redundant roles (By similarity). Modulates the transcriptional activity of nuclear hormone receptors. Is involved in ESR1-mediated transcription; required for ESR1

binding to the NKX2-1 promoter in breast cancer cells; binds to the RPRM promoter and is required for the estrogen-induced repression of RPRM. Involved in regulation of apoptosis by inhibiting the expression of BCL2. Involved in cell cycle regulation by activating expression of CDKN1B, alone or in conjunction with BRCA1. Originally described as a transcription activator for a number of liver genes such as AFP, albumin, tyrosine aminotransferase, PEPCK, etc. Interacts with the cis-acting regulatory regions of these genes. Involved in glucose homeostasis.

Cellular Location

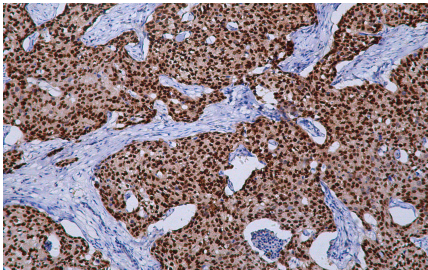
Nucleus {ECO:0000255 | PROSITE-ProRule:PRU00089,

Tissue Location

ECO:0000269 | PubMed:15987773, ECO:0000269 | PubMed:16331276}

Highly expressed in prostate and ESR1-positive breast tumors. Overexpressed in esophageal and lung adenocarcinomas

Images



Immunohistochemical analysis of paraffin-embedded breast cancer tissue using AD80238 performed on the Abcarta® FAIP-48 Fully automated IHC platform. Tissue was fixed with formaldehyde at room temperature, antigen retrieval was by heat mediation with a EDTA buffer (pH9. 0). Samples were incubated with primary antibody(Ready-to-use) for 15 min at room temperature. AmpSee™ Detection Systems(Abcepta:ADR005) was used as the secondary antibody.

Please note: All products are 'FOR RESEARCH USE ONLY. NOT FOR USE IN DIAGNOSTIC OR THERAPEUTIC PROCEDURES'.