

# 孕激素受体抗体试剂(免疫组织化学)

Rabbit Monoclonal Antibody (Mab)

Catalog # AD80246

## Product Information

Application	IHC
Primary Accession	<a href="#">P06401</a>
Reactivity	Human
Host	Rabbit
Clonality	Monoclonal
Clone Names	278G8D6
Calculated MW	98981

## Additional Information

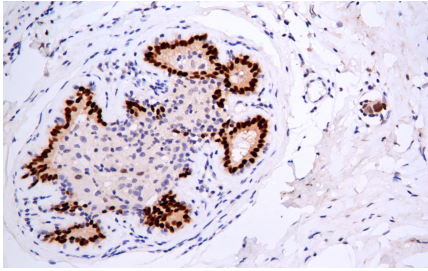
Gene ID	5241
Gene Name	PGR
Other Names	Progesterone receptor, PR, Nuclear receptor subfamily 3 group C member 3, PGR, NR3C3
Dilution	IHC~~Ready-to-use
Storage	Maintain refrigerated at 2-8°C.
Precautions	PR Antibody is for research use only and not for use in diagnostic or therapeutic procedures.

## Protein Information

Name	PGR
Synonyms	NR3C3
Function	The steroid hormones and their receptors are involved in the regulation of eukaryotic gene expression and affect cellular proliferation and differentiation in target tissues. Depending on the isoform, progesterone receptor functions as a transcriptional activator or repressor.
Cellular Location	Nucleus. Cytoplasm. Note=Nucleoplasmic shuttling is both hormone- and cell cycle-dependent. On hormone stimulation, retained in the cytoplasm in the G(1) and G(2)/M phases [Isoform 4]; Mitochondrion outer membrane
Tissue Location	In reproductive tissues the expression of isoform A and isoform B varies as a consequence of developmental and hormonal status. Isoform A and isoform B are expressed in comparable levels in uterine glandular epithelium during the proliferative phase of the menstrual cycle. Expression of isoform B but not of isoform A persists in the glands during mid-secretory phase. In the stroma, isoform A is the predominant form throughout the cycle. Heterogeneous isoform expression between the glands of the endometrium basalis and functionalis is implying region-specific responses to hormonal stimuli

## Images

---



Immunohistochemical analysis of paraffin-embedded breast cancer tissue using AD80246 performed on the Abcarta® FAIP-48 Fully automated IHC platform. Tissue was fixed with formaldehyde at room temperature, antigen retrieval was by heat mediation with a Citrate buffer (pH6. 0). Samples were incubated with primary antibody(Ready-to-use) for 15 min at room temperature. AmpSee™ Detection Systems(Abcepta:ADR005) was used as the secondary antibody.

Please note: All products are 'FOR RESEARCH USE ONLY. NOT FOR USE IN DIAGNOSTIC OR THERAPEUTIC PROCEDURES'.