

Thyroid Stimulating Hormone Antibody

Mouse Monoclonal Antibody (Mab)

Catalog # AD80256

Product Information

| | |
|--------------------------|------------------------|
| Application | IHC |
| Primary Accession | P01222 |
| Reactivity | Human |
| Host | Mouse |
| Clonality | Monoclonal |
| Isotype | IgG1 |
| Clone Names | 235H6D4 |
| Calculated MW | 15639 |

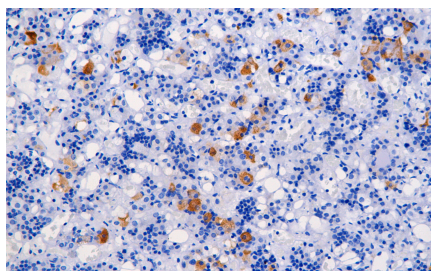
Additional Information

| | |
|--------------------|---|
| Gene ID | 7252 |
| Gene Name | TSHB |
| Other Names | Thyrotropin subunit beta, Thyroid-stimulating hormone subunit beta, TSH-B, TSH-beta, Thyrotropin beta chain, Thyrotropin alfa, TSHB |
| Dilution | IHC~~Ready-to-use |
| Storage | Maintain refrigerated at 2-8°C. |
| Precautions | Thyroid Stimulating Hormone Antibody is for research use only and not for use in diagnostic or therapeutic procedures. |

Protein Information

| | |
|--------------------------|--|
| Name | TSHB |
| Function | Indispensable for the control of thyroid structure and metabolism. |
| Cellular Location | Secreted. |

Images



Immunohistochemical analysis of paraffin-embedded colorectal carcinoma; tissue using AD80290 performed on the Abcarta® FAIP-48 Fully automated IHC platform. Tissue was fixed with formaldehyde at room temperature, antigen retrieval was by heat mediation with a Citrate buffer (pH6. 0). Samples were incubated with primary antibody (Ready-to-use) for 15 min at room temperature. AmpSee™ Detection Systems (Abcepta:ADR005) was used as the secondary

antibody.

Please note: All products are 'FOR RESEARCH USE ONLY. NOT FOR USE IN DIAGNOSTIC OR THERAPEUTIC PROCEDURES'.