

## C3c

Mouse Monoclonal antibody(Mab)  
Catalog # AD80278

### Product Information

---

Application	IHC-P
Primary Accession	<a href="#">P01024</a>
Reactivity	Human
Host	Mouse
Clonality	Monoclonal
Clone Names	332A2A5
Calculated MW	187148

### Additional Information

---

Gene ID	718
Gene Name	C3
Other Names	Complement C3, C3 and PZP-like alpha-2-macroglobulin domain-containing protein 1, Complement C3 beta chain, C3-beta-c, C3bc, Complement C3 alpha chain, C3a anaphylatoxin, Acylation stimulating protein, ASP, C3adesArg, Complement C3b alpha' chain, Complement C3c alpha' chain fragment 1, Complement C3dg fragment, Complement C3g fragment, Complement C3d fragment, Complement C3f fragment, Complement C3c alpha' chain fragment 2, C3, CPAMD1
Dilution	IHC-P~~Ready-to-use
Storage	Maintain refrigerated at 2-8°C.
Precautions	C3c Antibody is for research use only and not for use in diagnostic or therapeutic procedures.

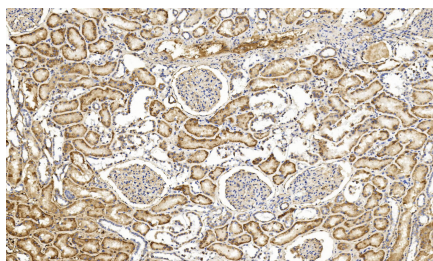
### Protein Information

---

Name	C3 {ECO:0000303   PubMed:2579379, ECO:0000312   HGNC:HGNC:1318}
Function	Precursor of non-enzymatic components of the classical, alternative, lectin and GZMK complement pathways, which consist in a cascade of proteins that leads to phagocytosis and breakdown of pathogens and signaling that strengthens the adaptive immune system.
Cellular Location	Secreted. [C3a anaphylatoxin]: Secreted
Tissue Location	Plasma..

### Images

---



Please note: All products are 'FOR RESEARCH USE ONLY. NOT FOR USE IN DIAGNOSTIC OR THERAPEUTIC PROCEDURES'.