

# Glycophorin A

Mouse Monoclonal antibody(Mab)

Catalog # AD80290

## Product Information

---

Application	IHC-P
Primary Accession	<a href="#">P02724</a>
Reactivity	Human
Host	Mouse
Clonality	Monoclonal
Clone Names	215F4S1
Calculated MW	16430

## Additional Information

---

Gene ID	2993
Gene Name	GYPA
Other Names	Glycophorin-A, MN sialoglycoprotein, PAS-2, Sialoglycoprotein alpha, CD235a, GYPA ( <a href="#">HGNC:4702</a> ), GPA
Dilution	IHC-P~~Ready-to-use
Storage	Maintain refrigerated at 2-8°C.
Precautions	Glycophorin A Antibody is for research use only and not for use in diagnostic or therapeutic procedures.

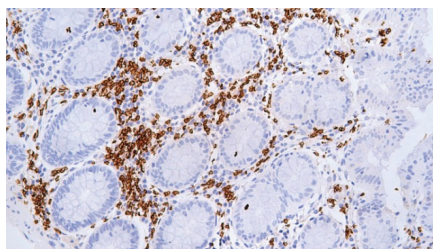
## Protein Information

---

Name	GYPA ( <a href="#">HGNC:4702</a> )
Function	Component of the ankyrin-1 complex, a multiprotein complex involved in the stability and shape of the erythrocyte membrane (PubMed: <a href="#">35835865</a> ). Glycophorin A is the major intrinsic membrane protein of the erythrocyte. The N-terminal glycosylated segment, which lies outside the erythrocyte membrane, has MN blood group receptors. Appears to be important for the function of SLC4A1 and is required for high activity of SLC4A1. May be involved in translocation of SLC4A1 to the plasma membrane.
Cellular Location	Cell membrane; Single-pass type I membrane protein Note=Appears to be colocalized with SLC4A1

## Images

---



Please note: All products are 'FOR RESEARCH USE ONLY. NOT FOR USE IN DIAGNOSTIC OR THERAPEUTIC PROCEDURES'.