

Glypican 3

Mouse Monoclonal antibody(Mab)

Catalog # AD80291

Product Information

Application	IHC-P
Primary Accession	P51654
Reactivity	Human
Host	Mouse
Clonality	Monoclonal
Clone Names	135F1Z5
Calculated MW	65563

Additional Information

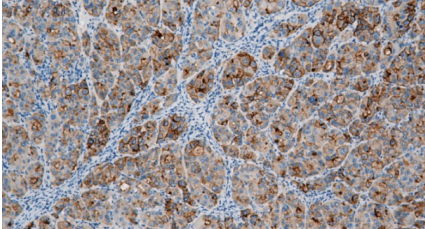
Gene ID	2719
Gene Name	GPC3
Other Names	Glypican-3, GTR2-2, Intestinal protein OCI-5, MXR7, Glypican-3 alpha subunit, Glypican-3 beta subunit, GPC3, OCI5
Dilution	IHC-P~~Ready-to-use
Storage	Maintain refrigerated at 2-8°C.
Precautions	Glypican 3 Antibody is for research use only and not for use in diagnostic or therapeutic procedures.

Protein Information

Name	GPC3
Synonyms	OCI5
Function	Cell surface proteoglycan (PubMed: 14610063). Negatively regulates the hedgehog signaling pathway when attached via the GPI- anchor to the cell surface by competing with the hedgehog receptor PTC1 for binding to hedgehog proteins (By similarity). Binding to the hedgehog protein SHH triggers internalization of the complex by endocytosis and its subsequent lysosomal degradation (By similarity). Positively regulates the canonical Wnt signaling pathway by binding to the Wnt receptor Frizzled and stimulating the binding of the Frizzled receptor to Wnt ligands (PubMed: 16227623 , PubMed: 24496449). Positively regulates the non-canonical Wnt signaling pathway (By similarity). Binds to CD81 which decreases the availability of free CD81 for binding to the transcriptional repressor HHEX, resulting in nuclear translocation of HHEX and transcriptional repression (By similarity). Inhibits the dipeptidyl peptidase activity of DPP4 (PubMed: 17549790). Plays a role in limb patterning and skeletal development by controlling the cellular response to BMP4 (By similarity). Modulates the effects of growth factors BMP2, BMP7

and FGF7 on renal branching morphogenesis (By similarity). Required for coronary vascular development (By similarity). Plays a role in regulating cell movements during gastrulation (By similarity).
Cellular Location Cell membrane; Lipid-anchor, GPI-anchor {ECO:0000250 | UniProtKB:P13265}; Extracellular side {ECO:0000250 | UniProtKB:P13265}
Tissue Location Detected in placenta (at protein level) (PubMed:32337544). Highly expressed in lung, liver and kidney

Images



肝癌

Please note: All products are 'FOR RESEARCH USE ONLY. NOT FOR USE IN DIAGNOSTIC OR THERAPEUTIC PROCEDURES'.