

ER-Beta Antibody

Mouse Monoclonal Antibody (Mab)

Catalog # AD80319

Product Information

Application	IHC
Primary Accession	Q92731
Reactivity	Human
Host	Mouse
Clonality	Monoclonal
Isotype	IgG2a
Clone Names	658E3C2
Calculated MW	59216

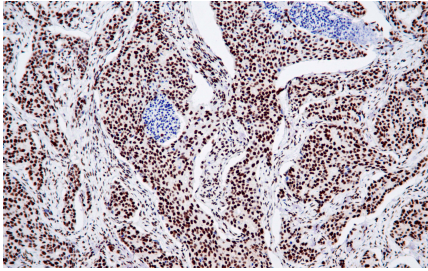
Additional Information

Gene ID	2100
Gene Name	ESR2
Other Names	Estrogen receptor beta, ER-beta, Nuclear receptor subfamily 3 group A member 2, ESR2, ESTRB, NR3A2
Dilution	IHC~~Ready-to-use
Storage	Maintain refrigerated at 2-8°C.
Precautions	ER-Beta Antibody is for research use only and not for use in diagnostic or therapeutic procedures.

Protein Information

Name	ESR2
Synonyms	ESTRB, NR3A2
Function	Nuclear hormone receptor. Binds estrogens with an affinity similar to that of ESR1/ER-alpha, and activates expression of reporter genes containing estrogen response elements (ERE) in an estrogen- dependent manner (PubMed: 20074560).
Cellular Location	Nucleus {ECO:0000255 PROSITE-ProRule:PRU00407, ECO:0000269 PubMed:19126643, ECO:0000269 PubMed:20074560}
Tissue Location	[Isoform 1]: Expressed in testis and ovary, and at a lower level in heart, brain, placenta, liver, skeletal muscle, spleen, thymus, prostate, colon, bone marrow, mammary gland and uterus Also found in uterine bone, breast, and ovarian tumor cell lines, but not in colon and liver tumors. [Isoform 4]: Expressed in the testis. [Isoform 6]: Expressed in testis, placenta, skeletal muscle, spleen and leukocytes, and at a lower level in heart, lung, liver, kidney, pancreas, thymus, prostate, colon, small intestine, bone marrow, mammary gland and uterus. Not expressed in brain.

Images



Immunohistochemical analysis of paraffin-embedded breast cancer tissue using AD80319 performed on the Abcarta® FAIP-48 Fully automated IHC platform. Tissue was fixed with formaldehyde at room temperature, antigen retrieval was by heat mediation with a EDTA buffer (pH9. 0). Samples were incubated with primary antibody(Ready-to-use) for 15 min at room temperature. AmpSee™ Detection Systems(Abcepta:ADR005) was used as the secondary antibody.

Please note: All products are 'FOR RESEARCH USE ONLY. NOT FOR USE IN DIAGNOSTIC OR THERAPEUTIC PROCEDURES'.