

LRP

Mouse Monoclonal antibody(Mab)

Catalog # AD80325

Product Information

Application	IHC-P
Primary Accession	Q07954
Reactivity	Human
Host	Mouse
Clonality	Monoclonal
Clone Names	359E4C2
Calculated MW	504606

Additional Information

Gene ID	4035
Gene Name	LRP1
Other Names	Prolow-density lipoprotein receptor-related protein 1, LRP-1, Alpha-2-macroglobulin receptor, A2MR, Apolipoprotein E receptor, APOER, CD91, Low-density lipoprotein receptor-related protein 1 85 kDa subunit, LRP-85, Low-density lipoprotein receptor-related protein 1 515 kDa subunit, LRP-515, Low-density lipoprotein receptor-related protein 1 intracellular domain, LRPICD, LRP1 (HGNC:6692), A2MR, APR
Dilution	IHC-P~~Ready-to-use
Storage	Maintain refrigerated at 2-8°C.
Precautions	LRP Antibody is for research use only and not for use in diagnostic or therapeutic procedures.

Protein Information

Name	LRP1 (HGNC:6692)
Synonyms	A2MR, APR
Function	Endocytic receptor involved in endocytosis and in phagocytosis of apoptotic cells (PubMed: 11907044 , PubMed: 12713657). Required for early embryonic development (By similarity). Involved in cellular lipid homeostasis. Involved in the plasma clearance of chylomicron remnants and activated LRPAP1 (alpha 2-macroglobulin), as well as the local metabolism of complexes between plasminogen activators and their endogenous inhibitors. Acts as an LRPAP1 alpha-2- macroglobulin receptor (PubMed: 1702392 , PubMed: 26142438). Acts as TAU/MAPT receptor and controls the endocytosis of TAU/MAPT as well as its subsequent spread (PubMed: 32296178). May modulate cellular events, such as APP metabolism, kinase-dependent intracellular signaling, neuronal calcium signaling as well as neurotransmission (PubMed: 12888553). Also acts

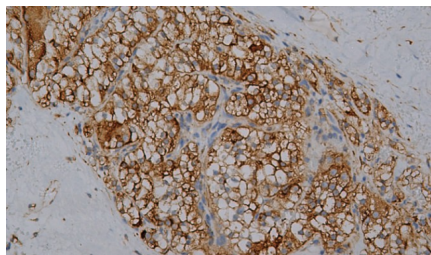
Cellular Location

as a receptor for IGFBP3 to mediate cell growth inhibition (PubMed:[9252371](#)).
[Low-density lipoprotein receptor-related protein 1 85 kDa subunit]: Cell membrane; Single-pass type I membrane protein Membrane, coated pit
[Low-density lipoprotein receptor-related protein 1 intracellular domain]: Cytoplasm Nucleus. Note=After cleavage, the intracellular domain (LRP1CD) is detected both in the cytoplasm and in the nucleus.

Tissue Location

Most abundant in liver, brain and lung.

Images



肾透明细胞癌

Please note: All products are 'FOR RESEARCH USE ONLY. NOT FOR USE IN DIAGNOSTIC OR THERAPEUTIC PROCEDURES'.