

MC、Mesothelioma

Rabbit Monoclonal antibody(Mab)

Catalog # AD80343

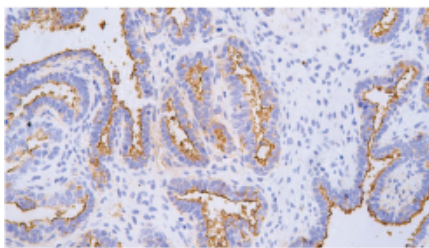
Product Information

Application	IHC-P
Reactivity	Human
Host	Rabbit
Clonality	Monoclonal
Clone Names	356K4G1

Additional Information

Dilution	IHC-P~~Ready-to-use
Storage	Maintain refrigerated at 2-8°C.
Precautions	MC Antibody is for research use only and not for use in diagnostic or therapeutic procedures.

Images



卵巢癌

Please note: All products are 'FOR RESEARCH USE ONLY. NOT FOR USE IN DIAGNOSTIC OR THERAPEUTIC PROCEDURES'.