

CD23

Mouse Monoclonal antibody(Mab)

Catalog # AD80351

Product Information

Application	IHC-P
Primary Accession	P06734
Reactivity	Human
Host	Mouse
Clonality	Monoclonal
Clone Names	365A2D1
Calculated MW	36469

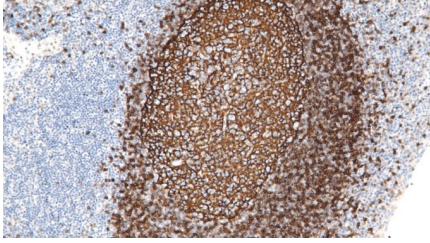
Additional Information

Gene ID	2208
Gene Name	FCER2
Other Names	Low affinity immunoglobulin epsilon Fc receptor, BLAST-2, C-type lectin domain family 4 member J, Fc-epsilon-RII, Immunoglobulin E-binding factor, Lymphocyte IgE receptor, CD23, Low affinity immunoglobulin epsilon Fc receptor membrane-bound form, Low affinity immunoglobulin epsilon Fc receptor soluble form, FCER2, CD23A, CLEC4J, FCE2, IGEBF
Dilution	IHC-P~~Ready-to-use
Storage	Maintain refrigerated at 2-8°C.
Precautions	CD23 Antibody is for research use only and not for use in diagnostic or therapeutic procedures.

Protein Information

Name	FCER2
Synonyms	CD23A, CLEC4J, FCE2, IGEBF
Function	Low-affinity receptor for immunoglobulin E (IgE) and CR2/CD21. Has essential roles in the regulation of IgE production and in the differentiation of B cells. On B cells, initiates IgE-dependent antigen uptake and presentation to T cells (PubMed: 2167225). On macrophages, upon IgE binding and antigen cross-linking induces intracellular killing of parasites through activation of L-Arginine- nitric oxide pathway (PubMed: 7544003).
Cellular Location	Cell membrane; Single-pass type II membrane protein. Cell membrane; Lipid-anchor. Secreted. Note=Also exists as a soluble excreted form, sCD23
Tissue Location	Detected in urine (at protein level).

Images



扁桃体

Please note: All products are 'FOR RESEARCH USE ONLY. NOT FOR USE IN DIAGNOSTIC OR THERAPEUTIC PROCEDURES'.