

CD6

Mouse Monoclonal antibody(Mab)

Catalog # AD80406

Product Information

Application	IHC-P
Primary Accession	P30203
Reactivity	Human
Host	Mouse
Clonality	Monoclonal
Clone Names	585A3B7
Calculated MW	71801

Additional Information

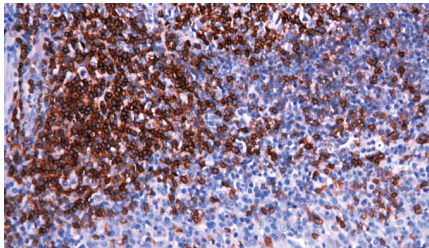
Gene ID	923
Gene Name	CD6
Other Names	T-cell differentiation antigen CD6, T12, TP120, CD6, Soluble CD6, CD6 (HGNC:1691)
Dilution	IHC-P~~Ready-to-use
Storage	Maintain refrigerated at 2-8°C.
Precautions	CD6 Antibody is for research use only and not for use in diagnostic or therapeutic procedures.

Protein Information

Name	CD6 (HGNC:1691)
Function	Cell adhesion molecule that mediates cell-cell contacts and regulates T-cell responses via its interaction with ALCAM/CD166 (PubMed: 15048703 , PubMed: 15294938 , PubMed: 16352806 , PubMed: 16914752 , PubMed: 24584089 , PubMed: 24945728). Contributes to signaling cascades triggered by activation of the TCR/CD3 complex (PubMed: 24584089). Functions as a costimulatory molecule; promotes T-cell activation and proliferation (PubMed: 15294938 , PubMed: 16352806 , PubMed: 16914752). Contributes to the formation and maturation of the immunological synapse (PubMed: 15294938 , PubMed: 16352806). Functions as a calcium- dependent pattern receptor that binds and aggregates both Gram-positive and Gram-negative bacteria. Binds both lipopolysaccharide (LPS) from Gram-negative bacteria and lipoteichoic acid from Gram-positive bacteria (PubMed: 17601777). LPS binding leads to the activation of signaling cascades and down-stream MAP kinases (PubMed: 17601777). Mediates activation of the inflammatory response and the secretion of pro-inflammatory cytokines in response to LPS (PubMed: 17601777).

Cellular Location	Cell membrane; Single-pass type I membrane protein. Note=Detected at the immunological synapse, i.e, at the contact zone between antigen-presenting dendritic cells and T-cells (PubMed:15294938, PubMed:16352806). Colocalizes with the TCR/CD3 complex at the immunological synapse (PubMed:15294938)
Tissue Location	Detected on thymocytes (PubMed:15294938). Detected on peripheral blood T-cells (PubMed:15048703, PubMed:16352806) Detected on natural killer (NK) cells (PubMed:16352806). Soluble CD6 is detected in blood serum (at protein level) (PubMed:17601777). Detected in spleen, thymus, appendix, lymph node and peripheral blood leukocytes (PubMed:9013954). Expressed by thymocytes, mature T-cells, a subset of B-cells known as B-1 cells, and by some cells in the brain

Images



扁桃体

Please note: All products are 'FOR RESEARCH USE ONLY. NOT FOR USE IN DIAGNOSTIC OR THERAPEUTIC PROCEDURES'.