

CD30 Antibody

Rabbit Monoclonal Antibody (Mab)

Catalog # AD80420

Product Information

Application	IHC
Primary Accession	P28908
Reactivity	Human
Host	Rabbit
Clonality	Monoclonal
Isotype	IgG
Clone Names	148M4D3
Calculated MW	63747

Additional Information

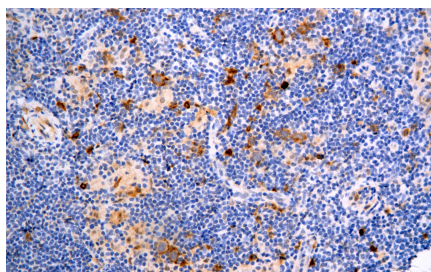
Gene ID	943
Gene Name	TNFRSF8 (HGNC:11923)
Other Names	Tumor necrosis factor receptor superfamily member 8 {ECO:0000312 HGNC:HGNC:11923}, CD30L receptor, Ki-1 antigen, Lymphocyte activation antigen CD30, CD30, TNFRSF8 (HGNC:11923)
Dilution	IHC~~Ready-to-use
Storage	Maintain refrigerated at 2-8°C.
Precautions	CD30 Antibody is for research use only and not for use in diagnostic or therapeutic procedures.

Protein Information

Name	TNFRSF8 (HGNC:11923)
Function	Receptor for TNFSF8/CD30L (PubMed: 8391931). May play a role in the regulation of cellular growth and transformation of activated lymphoblasts. Regulates gene expression through activation of NF-kappa- B (PubMed: 8999898).
Cellular Location	[Isoform 1]: Cell membrane; Single-pass type I membrane protein
Tissue Location	[Isoform 2]: Detected in alveolar macrophages (at protein level).

Images

Immunohistochemical analysis of paraffin-embedded hodgkin lymphoma tissue using AD80420 performed on the Abcarta® FAIP-48 Fully automated IHC platform. Tissue was fixed with formaldehyde at room



temperature, antigen retrieval was by heat mediation with a EDTA buffer (pH9. 0). Samples were incubated with primary antibody(Ready-to-use) for 15 min at room temperature. AmpSee™ Detection Systems(Abcepta:ADR005) was used as the secondary antibody.

Please note: All products are 'FOR RESEARCH USE ONLY. NOT FOR USE IN DIAGNOSTIC OR THERAPEUTIC PROCEDURES'.