

Arginase-1

Rabbit Monoclonal Antibody (Mab)

Catalog # AD80436

Product Information

Primary Accession	P05089
Reactivity	Human
Host	Rabbit
Calculated MW	34735

Additional Information

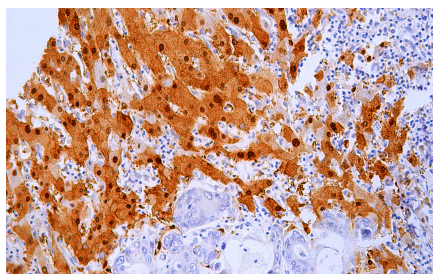
Gene ID	383
Gene Name	ARG1
Other Names	Arginase-1, 3.5.3.1, Liver-type arginase, Type I arginase, ARG1
Storage	Maintain refrigerated at 2-8°C.
Precautions	Arginase-1 Antibody is for research use only and not for use in diagnostic or therapeutic procedures.

Protein Information

Name	ARG1
Function	Key element of the urea cycle converting L-arginine to urea and L-ornithine, which is further metabolized into metabolites proline and polyamides that drive collagen synthesis and bioenergetic pathways critical for cell proliferation, respectively; the urea cycle takes place primarily in the liver and, to a lesser extent, in the kidneys.
Cellular Location	Cytoplasm. Cytoplasmic granule. Note=Localized in azurophil granules of neutrophils (PubMed:15546957)
Tissue Location	Within the immune system initially reported to be selectively expressed in granulocytes (polymorphonuclear leukocytes [PMNs]) (PubMed:15546957). Also detected in macrophages mycobacterial granulomas (PubMed:23749634). Expressed in group2 innate lymphoid cells (ILC2s) during lung disease (PubMed:27043409)

Images

Immunohistochemical analysis of paraffin-embedded human hepatocarcinoma tissue using AD80387 performed on the Abcarta® FAIP-48 Fully automated IHC platform. Tissue was fixed with formaldehyde at room temperature, antigen retrieval was by heat mediation with a EDTA buffer (pH9.0). Samples were incubated with



primary antibody(Ready-to-use) for 15 min at room temperature. AmpSee™ Detection Systems(Abcepta:ADR005) was used as the secondary antibody.

Please note: All products are 'FOR RESEARCH USE ONLY. NOT FOR USE IN DIAGNOSTIC OR THERAPEUTIC PROCEDURES'.