

Smooth Muscle Myosin

Rabbit Monoclonal antibody(Mab)

Catalog # AD80443

Product Information

Application	IHC-P
Primary Accession	P35749
Reactivity	Human
Host	Rabbit
Clonality	Monoclonal
Clone Names	614G0B2
Calculated MW	227339

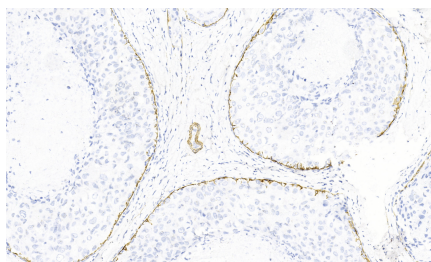
Additional Information

Gene ID	4629
Other Names	Myosin-11, Myosin heavy chain 11, Myosin heavy chain, smooth muscle isoform, SMMHC, MYH11, KIAA0866
Dilution	IHC-P~~Ready-to-use
Storage	Maintain refrigerated at 2-8°C.

Protein Information

Name	MYH11
Synonyms	KIAA0866
Function	Muscle contraction.
Cellular Location	Melanosome. Note=Identified by mass spectrometry in melanosome fractions from stage I to stage IV. Thick filaments of the myofibrils
Tissue Location	Smooth muscle; expressed in the umbilical artery, bladder, esophagus and trachea. Isoform 1 is mostly found in slowly contracting tonic muscles.

Images



乳腺癌

Please note: All products are 'FOR RESEARCH USE ONLY. NOT FOR USE IN DIAGNOSTIC OR THERAPEUTIC PROCEDURES'.