

Oligo-2

Rabbit Monoclonal antibody(Mab)

Catalog # AD80447

Product Information

Application	IHC-P
Primary Accession	Q13516
Reactivity	Human
Host	Rabbit
Clonality	Monoclonal
Clone Names	333G2C6
Calculated MW	32385

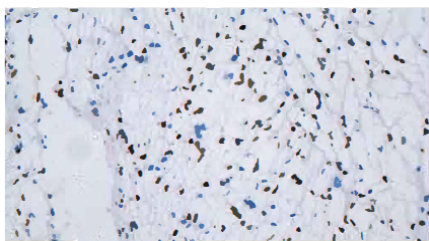
Additional Information

Gene ID	10215
Gene Name	IL2RA
Other Names	Oligodendrocyte transcription factor 2, Oligo2, Class B basic helix-loop-helix protein 1, bHLHb1, Class E basic helix-loop-helix protein 19, bHLHe19, Protein kinase C-binding protein 2, Protein kinase C-binding protein RACK17, OLIG2, BHLHB1, BHLHE19, PRKCBP2, RACK17
Dilution	IHC-P~~Ready-to-use
Storage	Maintain refrigerated at 2-8°C.
Precautions	CD25 Antibody is for research use only and not for use in diagnostic or therapeutic procedures.

Protein Information

Name	OLIG2
Synonyms	BHLHB1, BHLHE19, PRKCBP2, RACK17
Function	Required for oligodendrocyte and motor neuron specification in the spinal cord, as well as for the development of somatic motor neurons in the hindbrain. Functions together with ZNF488 to promote oligodendrocyte differentiation. Cooperates with OLIG1 to establish the pMN domain of the embryonic neural tube. Antagonist of V2 interneuron and of NKX2-2-induced V3 interneuron development.
Cellular Location	Nucleus {ECO:0000255 PROSITE-ProRule:PRU00981}. Cytoplasm. Note=The NLS contained in the bHLH domain could be masked in the native form and translocation to the nucleus could be mediated by interaction either with class E bHLH partner protein or with NKX2-2.
Tissue Location	Expressed in the brain, in oligodendrocytes. Strongly expressed in oligodendrogliomas, while expression is weak to moderate in astrocytomas. Expression in glioblastomas highly variable

Images



脑胶质瘤

Please note: All products are 'FOR RESEARCH USE ONLY. NOT FOR USE IN DIAGNOSTIC OR THERAPEUTIC PROCEDURES'.