

CD33

Mouse Monoclonal antibody(Mab)

Catalog # AD80466

Product Information

Application	IHC-P
Primary Accession	P20138
Reactivity	Human
Host	Mouse
Clonality	Monoclonal
Clone Names	140I2V1
Calculated MW	39825

Additional Information

Gene ID	945
Gene Name	GAST
Other Names	Myeloid cell surface antigen CD33, Sialic acid-binding Ig-like lectin 3, Siglec-3, gp67, CD33, CD33, SIGLEC3
Dilution	IHC-P~~Ready-to-use
Storage	Maintain refrigerated at 2-8°C.
Precautions	Gastrin Antibody is for research use only and not for use in diagnostic or therapeutic procedures.

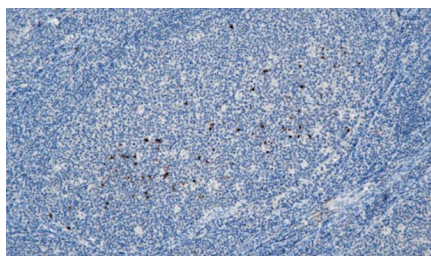
Protein Information

Name	CD33
Synonyms	SIGLEC3
Function	<p>Sialic-acid-binding immunoglobulin-like lectin (Siglec) that plays a role in mediating cell-cell interactions and in maintaining immune cells in a resting state (PubMed:10611343, PubMed:11320212, PubMed:15597323). Preferentially recognizes and binds alpha-2,3- and more avidly alpha-2,6-linked sialic acid-bearing glycans (PubMed:7718872). Upon engagement of ligands such as C1q or sialylated glycoproteins, two immunoreceptor tyrosine-based inhibitory motifs (ITIMs) located in CD33 cytoplasmic tail are phosphorylated by Src-like kinases such as LCK (PubMed:10887109, PubMed:28325905). These phosphorylations provide docking sites for the recruitment and activation of protein-tyrosine phosphatases PTPN6/SHP-1 and PTPN11/SHP-2 (PubMed:10206955, PubMed:10556798, PubMed:10887109). In turn, these phosphatases regulate downstream pathways through dephosphorylation of signaling molecules (PubMed:10206955, PubMed:10887109). One of the repressive effect of CD33 on monocyte activation requires phosphoinositide 3-kinase/PI3K</p>

Cellular Location
Tissue Location

(PubMed:[15597323](#)).
[Isoform CD33M]: Cell membrane; Single-pass type I membrane protein
Monocytic/myeloid lineage cells. In the brain, CD33 is mainly expressed on microglial cells

Images



扁桃體

Please note: All products are 'FOR RESEARCH USE ONLY. NOT FOR USE IN DIAGNOSTIC OR THERAPEUTIC PROCEDURES'.