

HGAL

Rabbit Monoclonal antibody(Mab)

Catalog # AD80479

Product Information

Application	IHC-P
Primary Accession	Q8N6F7
Reactivity	Human
Host	Rabbit
Clonality	Monoclonal
Clone Names	663I2C4
Calculated MW	21005

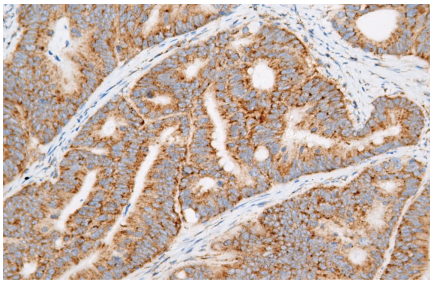
Additional Information

Gene ID	257144
Other Names	Germinal center-associated signaling and motility protein, Germinal center B-cell-expressed transcript 2 protein, Germinal center-associated lymphoma protein, hGAL, GCSAM, GAL, GCET2
Dilution	IHC-P~~Ready-to-use
Storage	Maintain refrigerated at 2-8°C.

Protein Information

Name	GCSAM
Synonyms	GAL, GCET2
Function	Involved in the negative regulation of lymphocyte motility. It mediates the migration-inhibitory effects of IL6. Serves as a positive regulator of the RhoA signaling pathway. Enhancement of RhoA activation results in inhibition of lymphocyte and lymphoma cell motility by activation of its downstream effector ROCK. Is a regulator of B-cell receptor signaling, that acts through SYK kinase activation.
Cellular Location	Cytoplasm. Cell membrane. Note=It relocalizes from the cytoplasm to podosome-like structures upon cell treatment with IL6
Tissue Location	Expressed in diffuse large B-cell lymphoma (DLBCL) and several germinal center (GC)-like lymphoma cell lines (at protein level). Highly expressed in normal GC lymphocytes and GC-derived malignancies. Expressed in thymus and spleen

Images



Please note: All products are 'FOR RESEARCH USE ONLY. NOT FOR USE IN DIAGNOSTIC OR THERAPEUTIC PROCEDURES'.