

# NKX2.2

Rabbit Monoclonal antibody(Mab)

Catalog # AD80493

## Product Information

Application	IHC-P
Primary Accession	<a href="#">O95096</a>
Reactivity	Human
Host	Rabbit
Clonality	Monoclonal
Clone Names	321I0C2
Calculated MW	30133

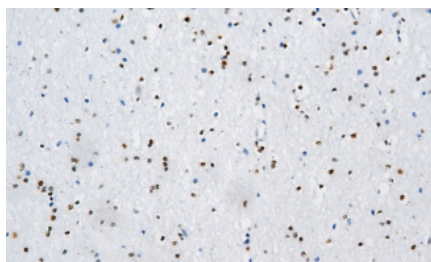
## Additional Information

Gene ID	4821
Other Names	Homeobox protein Nkx-2.2, Homeobox protein NK-2 homolog B, NKX2-2, NKX2.2, NKX2B
Dilution	IHC-P~~Ready-to-use
Storage	Maintain refrigerated at 2-8°C.

## Protein Information

Name	NKX2-2
Synonyms	NKX2.2, NKX2B
Function	Transcriptional activator involved in the development of insulin-producing beta cells in the endocrine pancreas (By similarity). May also be involved in specifying diencephalic neuromeric boundaries, and in controlling the expression of genes that play a role in axonal guidance. Binds to elements within the NEUROD1 promoter (By similarity).
Cellular Location	Nucleus {ECO:0000255 PROSITE-ProRule:PRU00108}.

## Images



脑

Please note: All products are 'FOR RESEARCH USE ONLY. NOT FOR USE IN DIAGNOSTIC OR THERAPEUTIC PROCEDURES'.