

Cadherin 17

Rabbit Polyclonal antibody(Pab)

Catalog # AD80494

Product Information

Application	IHC-P
Primary Accession	Q12864
Reactivity	Human
Host	Rabbit
Clonality	Polyclonal
Clone Names	poly

Additional Information

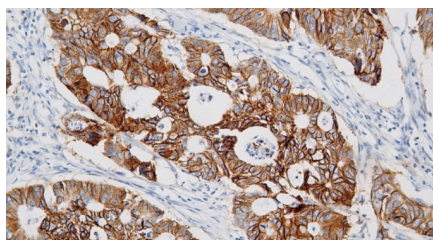
Gene ID	2026
Gene Name	ENO2
Other Names	Gamma-enolase, 4.2.1.11, 2-phospho-D-glycerate hydro-lyase, Enolase 2, Neural enolase, Neuron-specific enolase, NSE, ENO2
Dilution	IHC-P~~Ready-to-use
Storage	Maintain refrigerated at 2-8°C.
Precautions	NSE Antibody is for research use only and not for use in diagnostic or therapeutic procedures.

Protein Information

Function	Has neurotrophic and neuroprotective properties on a broad spectrum of central nervous system (CNS) neurons. Binds, in a calcium-dependent manner, to cultured neocortical neurons and promotes cell survival (By similarity).
Cellular Location	Cytoplasm. Cell membrane. Note=Can translocate to the plasma membrane in either the homodimeric (alpha/alpha) or heterodimeric (alpha/gamma) form.
Tissue Location	The alpha/alpha homodimer is expressed in embryo and in most adult tissues. The alpha/beta heterodimer and the beta/beta homodimer are found in striated muscle, and the alpha/gamma heterodimer and the gamma/gamma homodimer in neurons

Images

结直肠



Please note: All products are 'FOR RESEARCH USE ONLY. NOT FOR USE IN DIAGNOSTIC OR THERAPEUTIC PROCEDURES'.