

Smoothelin

Mouse Monoclonal antibody(Mab)

Catalog # AD80503

Product Information

Application	IHC-P
Primary Accession	P53814
Reactivity	Human
Host	Mouse
Clonality	Monoclonal
Clone Names	363I5A4
Calculated MW	99059

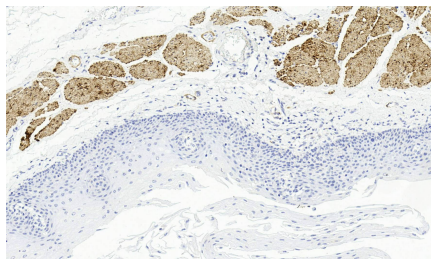
Additional Information

Gene ID	6525
Other Names	Smoothelin, SMTN, SMSMO
Dilution	IHC-P~~Ready-to-use
Storage	Maintain refrigerated at 2-8°C.

Protein Information

Name	SMTN
Synonyms	SMSMO
Function	Structural protein of the cytoskeleton.
Cellular Location	Cytoplasm, cytoskeleton. Note=Exhibits a filamentous organization
Tissue Location	Smooth muscle; contractile or vascular (for the long form)

Images



食管