

# Caveolin-1

Rabbit Monoclonal antibody(Mab)

Catalog # AD80512

## Product Information

---

Application	IHC-P
Primary Accession	<a href="#">Q03135</a>
Reactivity	Human
Host	Rabbit
Clonality	Monoclonal
Clone Names	314G4C1
Calculated MW	20472

## Additional Information

---

Gene ID	857
Other Names	Caveolin-1, CAV1, CAV
Dilution	IHC-P~~Ready-to-use
Storage	Maintain refrigerated at 2-8°C.

## Protein Information

---

Name	CAV1
Synonyms	CAV
Function	<p>May act as a scaffolding protein within caveolar membranes (PubMed:<a href="#">11751885</a>). Forms a stable heterooligomeric complex with CAV2 that targets to lipid rafts and drives caveolae formation. Mediates the recruitment of CAVIN proteins (CAVIN1/2/3/4) to the caveolae (PubMed:<a href="#">19262564</a>). Interacts directly with G-protein alpha subunits and can functionally regulate their activity (By similarity). Involved in the costimulatory signal essential for T-cell receptor (TCR)-mediated T-cell activation. Its binding to DPP4 induces T-cell proliferation and NF-kappa-B activation in a T-cell receptor/CD3-dependent manner (PubMed:<a href="#">17287217</a>). Recruits CTNNB1 to caveolar membranes and may regulate CTNNB1-mediated signaling through the Wnt pathway (By similarity). Negatively regulates TGFB1-mediated activation of SMAD2/3 by mediating the internalization of TGFBR1 from membrane rafts leading to its subsequent degradation (PubMed:<a href="#">25893292</a>). Binds 20(S)- hydroxycholesterol (20(S)-OHC) (By similarity).</p>
Cellular Location	<p>Golgi apparatus membrane; Peripheral membrane protein. Cell membrane; Peripheral membrane protein. Membrane, caveola; Peripheral membrane protein. Membrane raft. Golgi apparatus, trans-Golgi network {ECO:0000250 UniProtKB:P33724} Note=Colocalized with DPP4 in membrane rafts. Potential hairpin-like structure in the membrane. Membrane protein of</p>

**Tissue Location**

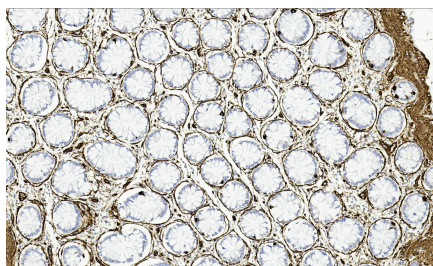
caveolae

Skeletal muscle, liver, stomach, lung, kidney and heart (at protein level).

Expressed in the brain

**Images**

---



结肠

Please note: All products are 'FOR RESEARCH USE ONLY. NOT FOR USE IN DIAGNOSTIC OR THERAPEUTIC PROCEDURES'.