

ACE2

Rabbit Monoclonal antibody(Mab)
Catalog # AD80519

Product Information

Application	IHC-P
Primary Accession	Q9BYF1
Reactivity	Human
Host	Rabbit
Clonality	Monoclonal
Clone Names	229I5N3
Calculated MW	92463

Additional Information

Gene ID	59272
Other Names	Angiotensin-converting enzyme 2, 3.4.17.23, Angiotensin-converting enzyme homolog, ACEH, Angiotensin-converting enzyme-related carboxypeptidase, ACE-related carboxypeptidase, 3.4.17.-, Metalloprotease MPROT15 {ECO:0000303 Ref.6}, Processed angiotensin-converting enzyme 2, ACE2 (HGNC:13557)
Dilution	IHC-P~~Ready-to-use
Storage	Maintain refrigerated at 2-8°C.

Protein Information

Name	ACE2 (HGNC:13557)
Function	Essential counter-regulatory carboxypeptidase of the renin- angiotensin hormone system that is a critical regulator of blood volume, systemic vascular resistance, and thus cardiovascular homeostasis (PubMed: 27217402). Converts angiotensin I to angiotensin 1- 9, a nine-amino acid peptide with anti-hypertrophic effects in cardiomyocytes, and angiotensin II to angiotensin 1-7, which then acts as a beneficial vasodilator and anti-proliferation agent, counterbalancing the actions of the vasoconstrictor angiotensin II (PubMed: 10924499 , PubMed: 10969042 , PubMed: 11815627 , PubMed: 14504186 , PubMed: 19021774). Also removes the C-terminal residue from three other vasoactive peptides, neurotensin, kinetensin, and des-Arg bradykinin, but is not active on bradykinin (PubMed: 10969042 , PubMed: 11815627). Also cleaves other biological peptides, such as apelin (apelin-13, [Pyr1]apelin-13, apelin-17, apelin-36), casomorphins (beta-casomorphin- 7, neocasomorphin) and dynorphin A with high efficiency (PubMed: 11815627 , PubMed: 27217402 , PubMed: 28293165). In addition, ACE2 C-terminus is homologous to collectrin and is responsible for the trafficking of

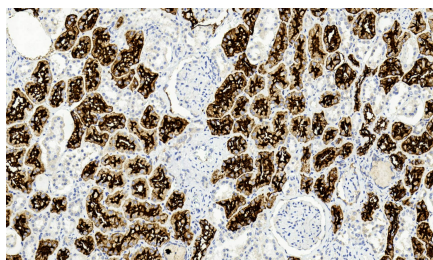
Cellular Location

Tissue Location

the neutral amino acid transporter SL6A19 to the plasma membrane of gut epithelial cells via direct interaction, regulating its expression on the cell surface and its catalytic activity (PubMed:[18424768](#), PubMed:[19185582](#)). [Processed angiotensin-converting enzyme 2]: Secreted [Isoform 2]: Apical cell membrane

Expressed in endothelial cells from small and large arteries, and in arterial smooth muscle cells (at protein level) (PubMed:15141377). Expressed in enterocytes of the small intestine, Leydig cells and Sertoli cells (at protein level) (PubMed:15141377) Expressed in the renal proximal tubule and the small intestine (at protein level) (PubMed:18424768). Expressed in heart, kidney, testis, and gastrointestinal system (at protein level) (PubMed:10924499, PubMed:10969042, PubMed:12459472, PubMed:15231706, PubMed:15671045, PubMed:32170560, PubMed:32715618). In lung, expressed at low levels in some alveolar type 2 cells, the expression seems to be individual- specific (at protein level) (PubMed:15141377, PubMed:32170560, PubMed:32425701, PubMed:32715618, PubMed:33432184). Expressed in nasal epithelial cells (at protein level) (PubMed:32333915, PubMed:33432184) Coexpressed with TMPRSS2 within some lung alveolar type 2 cells, ileal absorptive enterocytes, intestinal epithelial cells, cornea, gallbladder and nasal goblet secretory cells (PubMed:32327758, PubMed:32358202, PubMed:32413319). Coexpressed with TMPRSS4 within mature enterocytes (PubMed:32404436).

Images



肾脏

Please note: All products are 'FOR RESEARCH USE ONLY. NOT FOR USE IN DIAGNOSTIC OR THERAPEUTIC PROCEDURES'.