

CD103

Rabbit Monoclonal antibody(Mab)

Catalog # AD80554

Product Information

Application	IHC-P
Primary Accession	P38570
Reactivity	Human
Host	Rabbit
Clonality	Monoclonal
Clone Names	374G1B5
Calculated MW	130159

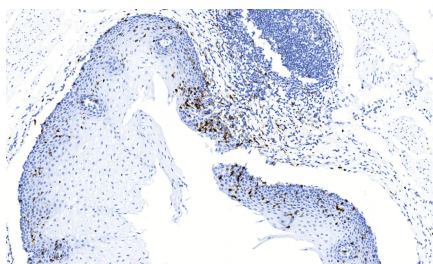
Additional Information

Gene ID	3682
Other Names	Integrin alpha-E, HML-1 antigen, Integrin alpha-IEL, Mucosal lymphocyte 1 antigen, CD103, Integrin alpha-E light chain, Integrin alpha-E heavy chain, ITGAE
Dilution	IHC-P~~Ready-to-use
Storage	Maintain refrigerated at 2-8°C.

Protein Information

Name	ITGAE
Function	Integrin ITGAE/ITGB7 (alpha-E/beta-7) is a receptor for E- cadherin. It mediates adhesion of intra-epithelial T-lymphocytes to epithelial cell monolayers.
Cellular Location	Membrane; Single-pass type I membrane protein.
Tissue Location	Expressed on a subclass of T-lymphocytes known as intra-epithelial lymphocytes which are located between mucosal epithelial cells

Images



食管

Please note: All products are 'FOR RESEARCH USE ONLY. NOT FOR USE IN DIAGNOSTIC OR THERAPEUTIC PROCEDURES'.