

CD11c

Rabbit Monoclonal antibody(Mab)
Catalog # AD80555

Product Information

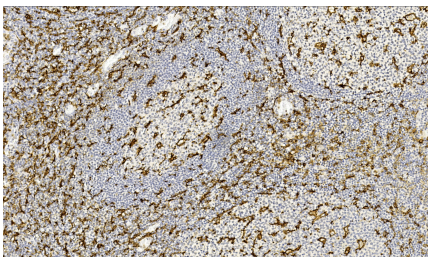
Application	IHC-P
Primary Accession	P20702
Reactivity	Human
Host	Rabbit
Clonality	Monoclonal
Clone Names	384J6A2

Additional Information

Other Names	Integrin alpha-X, CD11 antigen-like family member C, Leu M5, Leukocyte adhesion glycoprotein p150, 95 alpha chain, Leukocyte adhesion receptor p150, 95, CD11c, ITGAX, CD11C
Dilution	IHC-P~~Ready-to-use
Storage	Maintain refrigerated at 2-8°C.

Protein Information

Images



扁桃體

Please note: All products are 'FOR RESEARCH USE ONLY. NOT FOR USE IN DIAGNOSTIC OR THERAPEUTIC PROCEDURES'.