

SMARCA2

Rabbit Monoclonal antibody(Mab)
Catalog # AD80560

Product Information

Application	IHC-P
Primary Accession	Q7Z6M1
Reactivity	Human
Host	Rabbit
Clonality	Monoclonal
Clone Names	513M2A7
Calculated MW	40565

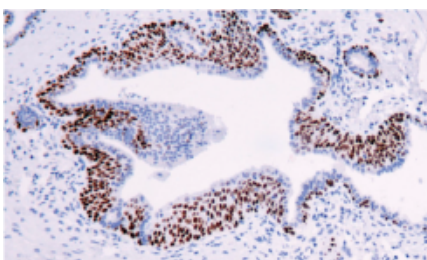
Additional Information

Gene ID	10244
Other Names	Rab9 effector protein with kelch motifs, 40 kDa Rab9 effector protein, p40, RABEPK (HGNC:16896), RAB9P40
Dilution	IHC-P~~Ready-to-use
Storage	Maintain refrigerated at 2-8°C.

Protein Information

Name	RABEPK (HGNC:16896)
Synonyms	RAB9P40
Function	Rab9 effector required for endosome to trans-Golgi network (TGN) transport.
Cellular Location	Cytoplasm. Endosome membrane. Note=Interaction with PIKFYVE and subsequent phosphorylation recruits it to the endosomal membrane

Images



前列腺癌

Please note: All products are 'FOR RESEARCH USE ONLY. NOT FOR USE IN DIAGNOSTIC OR THERAPEUTIC PROCEDURES'.