

Stathmin

Rabbit Monoclonal antibody(Mab)

Catalog # AD80562

Product Information

Application	IHC-P
Primary Accession	P16949
Reactivity	Human
Host	Rabbit
Clonality	Monoclonal
Clone Names	835G1C2
Calculated MW	17303

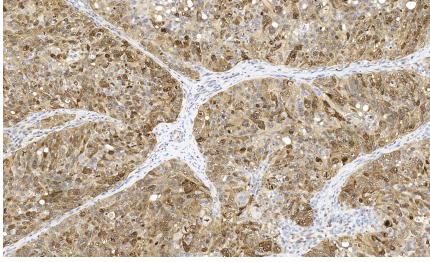
Additional Information

Gene ID	3925
Other Names	Stathmin, Leukemia-associated phosphoprotein p18, Metablastin, Oncoprotein 18, Op18, Phosphoprotein p19, pp19, Prosolin, Protein Pr22, pp17, STMN1, C1orf215, LAP18, OP18
Dilution	IHC-P~~Ready-to-use
Storage	Maintain refrigerated at 2-8°C.

Protein Information

Name	STMN1
Synonyms	C1orf215, LAP18, OP18
Function	Involved in the regulation of the microtubule (MT) filament system by destabilizing microtubules. Prevents assembly and promotes disassembly of microtubules. Phosphorylation at Ser-16 may be required for axon formation during neurogenesis. Involved in the control of the learned and innate fear (By similarity).
Cellular Location	Cytoplasm, cytoskeleton.
Tissue Location	Ubiquitous. Expression is strongest in fetal and adult brain, spinal cord, and cerebellum, followed by thymus, bone marrow, testis, and fetal liver. Expression is intermediate in colon, ovary, placenta, uterus, and trachea, and is readily detected at substantially lower levels in all other tissues examined. Lowest expression is found in adult liver. Present in much greater abundance in cells from patients with acute leukemia of different subtypes than in normal peripheral blood lymphocytes, non-leukemic proliferating lymphoid cells, bone marrow cells, or cells from patients with chronic lymphoid or myeloid leukemia.

Images



卵巢癌

Please note: All products are 'FOR RESEARCH USE ONLY. NOT FOR USE IN DIAGNOSTIC OR THERAPEUTIC PROCEDURES'.