

Granzyme B

Rabbit Monoclonal antibody(Mab)

Catalog # AD80610

Product Information

Application	IHC-P
Primary Accession	P10144
Reactivity	Human
Host	Rabbit
Clonality	Monoclonal
Clone Names	417M1A3
Calculated MW	27716

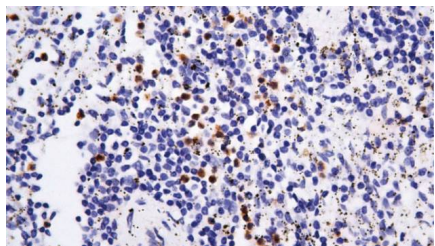
Additional Information

Gene ID	3002
Other Names	Granzyme B, 3.4.21.79, C11, CTLA-1, Cathepsin G-like 1, CTSG1, Cytotoxic T-lymphocyte proteinase 2, Lymphocyte protease, Fragmentin-2, Granzyme-2, Human lymphocyte protein, HLP, SECT, T-cell serine protease 1-3E, GZMB {ECO:0000303 PubMed:32188940, ECO:0000312 HGNC:HGNC:4709}
Dilution	IHC-P~~Ready-to-use
Storage	Maintain refrigerated at 2-8°C.

Protein Information

Name	GZMB {ECO:0000303 PubMed:32188940, ECO:0000312 HGNC:HGNC:4709}
Function	Abundant protease in the cytosolic granules of cytotoxic T- cells and NK-cells which activates caspase-independent pyroptosis when delivered into the target cell through the immunological synapse (PubMed: 1985927 , PubMed: 3262682 , PubMed: 3263427). It cleaves after Asp (PubMed: 1985927 , PubMed: 8258716). Once delivered into the target cell, acts by catalyzing cleavage of gasdermin-E (GSDME), releasing the pore- forming moiety of GSDME, thereby triggering pyroptosis and target cell death (PubMed: 31953257 , PubMed: 32188940). Seems to be linked to an activation cascade of caspases (aspartate-specific cysteine proteases) responsible for apoptosis execution. Cleaves caspase-3, -9 and -10 (CASP3, CASP9 and CASP10, respectively) to give rise to active enzymes mediating apoptosis (PubMed: 9852092). Cleaves and activates CASP7 in response to bacterial infection, promoting plasma membrane repair (By similarity).
Cellular Location	Secreted. Cytolytic granule. Note=Delivered into the target cell by perforin (PubMed:20038786).

Images



脾脏

Please note: All products are 'FOR RESEARCH USE ONLY. NOT FOR USE IN DIAGNOSTIC OR THERAPEUTIC PROCEDURES'.