

ALDH2, Biotinylated

Peptide-affinity purified goat antibody
Catalog # AF3238b

Product Information

Application	WB, Pep-ELISA
Primary Accession	P05091
Other Accession	NP_000681.2 , 217
Reactivity	Human, Mouse, Rat
Predicted	Pig, Dog
Host	Goat
Clonality	Polyclonal
Isotype	IgG
Calculated MW	56381

Additional Information

Gene ID	217
Other Names	Aldehyde dehydrogenase, mitochondrial, 1.2.1.3, ALDH class 2, ALDH-E2, ALDHI, ALDH2, ALDM
Dilution	WB~~1:1000 Pep-ELISA~~N/A
Format	0.5 mg/ml in Tris saline, 0.02% sodium azide, pH7.3 with 0.5% bovine serum albumin
Storage	Maintain refrigerated at 2-8°C for up to 6 months. For long term storage store at -20°C in small aliquots to prevent freeze-thaw cycles.
Precautions	ALDH2, Biotinylated is for research use only and not for use in diagnostic or therapeutic procedures.

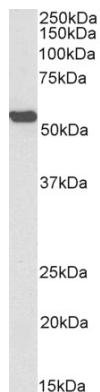
Protein Information

Name	ALDH2
Synonyms	ALDM
Function	Required for clearance of cellular formaldehyde, a cytotoxic and carcinogenic metabolite that induces DNA damage.
Cellular Location	Mitochondrion matrix.

References

Association between personality traits and ALDH2 polymorphism in Japanese male alcoholics. Kimura M, Sawayama T, Matsushita S, Higuchi S, Kashima H, Alcoholism, clinical and experimental research 2009 May 33 (5): 799-803. PMID: 19298328

Images



Biotinylated EB10118 (0.3 µg/ml) staining of Mouse Liver lysate (35 µg protein in RIPA buffer), exactly mirroring its parental non-biotinylated product. Primary incubation was 1 hour. Detected by chemiluminescence, using streptavidin-HRP and using NAP block

Please note: All products are 'FOR RESEARCH USE ONLY. NOT FOR USE IN DIAGNOSTIC OR THERAPEUTIC PROCEDURES'.