

cytokeratin 19 (aa285-298), Biotinylated

Peptide-affinity purified goat antibody

Catalog # AF4070b

Product Information

Application	WB, Pep-ELISA
Primary Accession	P08727
Other Accession	NP_002267.2 , 3880
Reactivity	Human
Host	Goat
Clonality	Polyclonal
Isotype	IgG
Calculated MW	44106

Additional Information

Gene ID	3880
Other Names	Keratin, type I cytoskeletal 19, Cytokeratin-19, CK-19, Keratin-19, K19, KRT19
Dilution	WB~~1:1000 Pep-ELISA~~N/A
Format	0.5 mg/ml in Tris saline, 0.02% sodium azide, pH7.3 with 0.5% bovine serum albumin
Storage	Maintain refrigerated at 2-8°C for up to 6 months. For long term storage store at -20°C in small aliquots to prevent freeze-thaw cycles.
Precautions	cytokeratin 19 (aa285-298), Biotinylated is for research use only and not for use in diagnostic or therapeutic procedures.

Protein Information

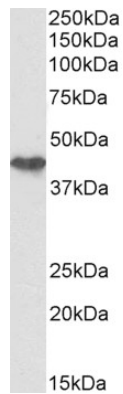
Name	KRT19
Function	Involved in the organization of myofibers. Together with KRT8, helps to link the contractile apparatus to dystrophin at the costameres of striated muscle.
Tissue Location	Expressed in a defined zone of basal keratinocytes in the deep outer root sheath of hair follicles. Also observed in sweat gland and mammary gland ductal and secretory cells, bile ducts, gastrointestinal tract, bladder urothelium, oral epithelia, esophagus, ectocervical epithelium (at protein level). Expressed in epidermal basal cells, in nipple epidermis and a defined region of the hair follicle. Also seen in a subset of vascular wall cells in both the veins and artery of human umbilical cord, and in umbilical cord vascular smooth muscle. Observed in muscle fibers accumulating in the costameres of

myoplasm at the sarcolemma in structures that contain dystrophin and spectrin.

References

Full-length cytokeratin-19 is released by human tumor cells: a potential role in metastatic progression of breast cancer. Alix-Panabières C, Vendrell JP, Slijper M, Pellé O, Barbotte E, Mercier G, Jacot W, Fabbro M, Pantel K. Breast cancer research : BCR 2009 11 (3): R39. PMID: 19549321

Images



Biotinylated EB12359 (0.3 µg/ml) staining of Human Colorectal cancer lysate (35 µg protein in RIPA buffer), exactly mirroring its parental non-biotinylated product. Primary incubation was 1 hour. Detected by chemiluminescence, using streptavidin-HRP and usi

Please note: All products are 'FOR RESEARCH USE ONLY. NOT FOR USE IN DIAGNOSTIC OR THERAPEUTIC PROCEDURES'.