

Anti-14-3-3 sigma / Stratifin Antibody (Internal), Biotinylated

Catalog # AF4281a

Product Information

Application	WB, IHC, E
Primary Accession	P31947
Other Accession	2810 , NP_006133.1 , 55948 , 313017
Reactivity	Human, Mouse
Predicted	Human, Mouse, Rat, Pig, Dog
Calculated MW	27774

Additional Information

Gene ID	2810
Other Names	cancer; disease; epithelial marker
Dilution	WB~~1:1000 IHC~~1:100~500 E~~N/A
Storage	Maintain refrigerated at 2-8°C for up to 6 months. For long term storage store at -20°C in small aliquots to prevent freeze-thaw cycles.
Precautions	Anti-14-3-3 sigma / Stratifin Antibody (Internal), Biotinylated is for research use only and not for use in diagnostic or therapeutic procedures.

Protein Information

Name	SFN
Synonyms	HME1 {ECO:0000303 PubMed:1390337}
Function	Adapter protein implicated in the regulation of a large spectrum of both general and specialized signaling pathways (PubMed: 15731107 , PubMed: 22634725 , PubMed: 28202711 , PubMed: 37797010). Binds to a large number of partners, usually by recognition of a phosphoserine or phosphothreonine motif (PubMed: 15731107 , PubMed: 22634725 , PubMed: 28202711 , PubMed: 37797010). Binding generally results in the modulation of the activity of the binding partner (PubMed: 15731107 , PubMed: 22634725 , PubMed: 28202711 , PubMed: 37797010). Promotes cytosolic retention of GBP1 GTPase by binding to phosphorylated GBP1, thereby inhibiting the innate immune response (PubMed: 37797010). Also acts as a TP53/p53-regulated inhibitor of G2/M progression (PubMed: 9659898). When bound to KRT17, regulates protein synthesis and epithelial cell growth by stimulating Akt/mTOR pathway (By similarity). Acts to maintain

desmosome cell junction adhesion in epithelial cells via interacting with and sequestering PKP3 to the cytoplasm, thereby restricting its translocation to existing desmosome structures and therefore maintaining desmosome protein homeostasis (PubMed:[24124604](#)). Also acts to facilitate PKP3 exchange at desmosome plaques, thereby maintaining keratinocyte intercellular adhesion (PubMed:[29678907](#)). May also regulate MDM2 autoubiquitination and degradation and thereby activate p53/TP53 (PubMed:[18382127](#)).

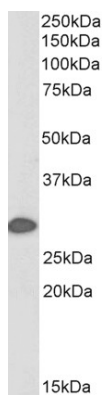
Cellular Location

Cytoplasm. Nucleus {ECO:0000250|UniProtKB:O70456} Secreted. Note=May be secreted by a non- classical secretory pathway.

Tissue Location

Present mainly in tissues enriched in stratified squamous keratinizing epithelium.

Images



Biotinylated antibody (0.1 µg/ml) staining of Mouse Skin lysate (35 µg protein in RIPA buffer), exactly mirroring its parental non-biotinylated product. Primary incubation was 1 hour. Detected by chemiluminescence, using streptavidin-HRP and using NAP blocker as a substitute for skimmed milk.

Please note: All products are 'FOR RESEARCH USE ONLY. NOT FOR USE IN DIAGNOSTIC OR THERAPEUTIC PROCEDURES'.