

# Anti-ALT1 / GPT1 Antibody (aa391-405)

Catalog # AF4285a

## Product Information

---

Application	WB, E
Primary Accession	<a href="#">P24298</a>
Other Accession	<a href="#">2875</a> , <a href="#">NP_005300.1</a>
Reactivity	Human
Predicted	Human
Calculated MW	54637

## Additional Information

---

Gene ID	2875
Other Names	acetylated, 6-(pyridoxal phosphate)lysine
Dilution	WB~~1:1000 E~~N/A
Storage	Maintain refrigerated at 2-8°C for up to 6 months. For long term storage store at -20°C in small aliquots to prevent freeze-thaw cycles.
Precautions	Anti-ALT1 / GPT1 Antibody (aa391-405) is for research use only and not for use in diagnostic or therapeutic procedures.

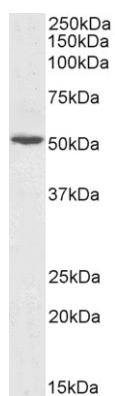
## Protein Information

---

Name	GPT
Synonyms	AAT1, GPT1
Function	Catalyzes the reversible transamination between alanine and 2-oxoglutarate to form pyruvate and glutamate. Participates in cellular nitrogen metabolism and also in liver gluconeogenesis starting with precursors transported from skeletal muscles (By similarity).
Cellular Location	Cytoplasm.
Tissue Location	Liver, kidney, heart, and skeletal muscles. Expressed at moderate levels in the adipose tissue

## Images

---



Antibody (0.1 µg/ml) staining of Human Liver lysate (35 µg protein in RIPA buffer). Primary incubation was 1 hour. Detected by chemiluminescence.

Please note: All products are 'FOR RESEARCH USE ONLY. NOT FOR USE IN DIAGNOSTIC OR THERAPEUTIC PROCEDURES'.