

# Goat Anti-AIMP1 / SCYE1 Antibody (aa137-149) (internal region), Biotinylated

Catalog # AF4293a

## Product Information

---

Application	WB, E
Primary Accession	<a href="#">Q12904</a>
Other Accession	<a href="#">NP_004748.2</a> , <a href="#">NP_001135888.1</a> , <a href="#">9255</a>
Reactivity	Human
Predicted	Human, Pig, Dog
Host	Goat
Isotype	IgG
Calculated MW	34353

## Additional Information

---

Gene ID	9255
Other Names	Aminoacyl tRNA synthase complex-interacting multifunctional protein 1, Multisynthase complex auxiliary component p43, Endothelial monocyte-activating polypeptide 2, EMAP-2, Endothelial monocyte-activating polypeptide II, EMAP-II, Small inducible cytokine subfamily E member 1, AIMP1, EMAP2, SCYE1
Dilution	WB~~1:1000 E~~N/A
Immunogen	This antibody is expected to recognize both reported isoforms (NP_004748.2; NP_001135888.1). Reported variants represent identical protein: NP_004748.2, NP_001135887.1
Storage	Maintain refrigerated at 2-8°C for up to 6 months. For long term storage store at -20°C in small aliquots to prevent freeze-thaw cycles.
Precautions	Goat Anti-AIMP1 / SCYE1 Antibody (aa137-149) (internal region), Biotinylated is for research use only and not for use in diagnostic or therapeutic procedures.

## Protein Information

---

Name	AIMP1
Synonyms	EMAP2, SCYE1
Function	Non-catalytic component of the multisynthase complex. Stimulates the catalytic activity of cytoplasmic arginyl-tRNA synthase (PubMed: <a href="#">10358004</a> ).

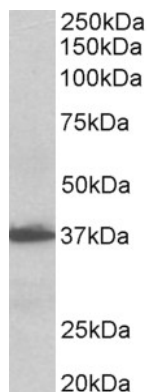
Binds tRNA. Possesses inflammatory cytokine activity (PubMed:[11306575](#)). Negatively regulates TGF-beta signaling through stabilization of SMURF2 by binding to SMURF2 and inhibiting its SMAD7- mediated degradation (By similarity). Involved in glucose homeostasis through induction of glucagon secretion at low glucose levels (By similarity). Promotes dermal fibroblast proliferation and wound repair (PubMed:[16472771](#)). Regulates KDEL1-mediated retention of HSP90B1/gp96 in the endoplasmic reticulum (By similarity). Plays a role in angiogenesis by inducing endothelial cell migration at low concentrations and endothelial cell apoptosis at high concentrations (PubMed:[12237313](#)). Induces maturation of dendritic cells and monocyte cell adhesion (PubMed:[11818442](#)). Modulates endothelial cell responses by degrading HIF-1A through interaction with PSMA7 (PubMed:[19362550](#)).

### Cellular Location

Nucleus. Cytoplasm, cytosol. Secreted. Endoplasmic reticulum {ECO:0000250|UniProtKB:P31230}. Golgi apparatus {ECO:0000250|UniProtKB:P31230}. Note=Enriched in secretory vesicles of pancreatic alpha cells and secreted from the pancreas in response to low glucose levels (By similarity). Secreted in response to hypoxia (PubMed:10850427). Also secreted in response to both apoptotic and necrotic cell death. {ECO:0000250|UniProtKB:P31230, ECO:0000269|PubMed:10850427}

### Images

---



Biotinylated AF4293a (0.1 µg/ml) staining of Human Lymph Node lysate (35 µg protein in RIPA buffer). Primary incubation was 1 hour. Detected by chemiluminescence.

Please note: All products are 'FOR RESEARCH USE ONLY. NOT FOR USE IN DIAGNOSTIC OR THERAPEUTIC PROCEDURES'.