

# Goat Anti-Lactadherin Antibody (internal region)

Catalog # AF4300a

## Product Information

Application	WB, E
Primary Accession	<a href="#">Q08431</a>
Other Accession	<a href="#">NP_005919.2</a> , <a href="#">NP_001108086.1</a> , <a href="#">4240</a>
Reactivity	Human
Predicted	Human
Host	Goat
Isotype	IgG
Calculated MW	43105

## Additional Information

Gene ID	4240
Other Names	Lactadherin, Breast epithelial antigen BA46, HMFG, MFGM, Milk fat globule-EGF factor 8, MFG-E8, SED1, Lactadherin short form, Medin, MFGE8
Dilution	WB~~1:1000 E~~N/A
Immunogen	This antibody is expected to recognize both reported isoforms (NP_005919.2; NP_001108086.1).
Storage	Maintain refrigerated at 2-8°C for up to 6 months. For long term storage store at -20°C in small aliquots to prevent freeze-thaw cycles.
Precautions	Goat Anti-Lactadherin Antibody (internal region) is for research use only and not for use in diagnostic or therapeutic procedures.

## Protein Information

Name	MFGE8
Function	Plays an important role in the maintenance of intestinal epithelial homeostasis and the promotion of mucosal healing. Promotes VEGF-dependent neovascularization (By similarity). Contributes to phagocytic removal of apoptotic cells in many tissues. Specific ligand for the alpha-v/beta-3 and alpha-v/beta-5 receptors. Also binds to phosphatidylserine-enriched cell surfaces in a receptor-independent manner. Zona pellucida-binding protein which may play a role in gamete interaction.
Cellular Location	Membrane; Peripheral membrane protein. Secreted. Cytoplasmic vesicle, secretory vesicle, acrosome membrane {ECO:0000250 UniProtKB:P79385}; Peripheral membrane protein {ECO:0000250 UniProtKB:P79385}.

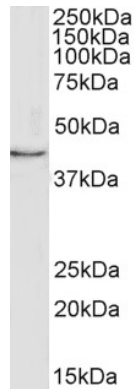
Note=Located in the acrosomal region of zona-pellucida bound sperm.  
{ECO:0000250|UniProtKB:P79385}

## Tissue Location

Mammary epithelial cell surfaces and aortic media. Overexpressed in several carcinomas

## Images

---



AF4300a (1 µg/ml) staining of MCF7 cell lysate (35 µg protein in RIPA buffer). Primary incubation was 1 hour. Detected by chemiluminescence.

Please note: All products are 'FOR RESEARCH USE ONLY. NOT FOR USE IN DIAGNOSTIC OR THERAPEUTIC PROCEDURES'.