

# Goat Anti-kynurenine 3-monooxygenase Antibody (C Terminus)

Catalog # AF4303a

## Product Information

---

Application	WB, E
Primary Accession	<a href="#">O15229</a>
Other Accession	<a href="#">NP_003670.2</a> , <a href="#">8564</a>
Reactivity	Human
Predicted	Human
Host	Goat
Isotype	IgG
Calculated MW	55810

## Additional Information

---

Gene ID	8564
Other Names	Kynurenine 3-monooxygenase {ECO:0000255   HAMAP-Rule:MF_03018}, 1.14.13.9 {ECO:0000255   HAMAP-Rule:MF_03018}, Kynurenine 3-hydroxylase {ECO:0000255   HAMAP-Rule:MF_03018}, KMO
Dilution	WB~~1:1000 E~~N/A
Storage	Maintain refrigerated at 2-8°C for up to 6 months. For long term storage store at -20°C in small aliquots to prevent freeze-thaw cycles.
Precautions	Goat Anti-kynurenine 3-monooxygenase Antibody (C Terminus) is for research use only and not for use in diagnostic or therapeutic procedures.

## Protein Information

---

Name	KMO {ECO:0000255   HAMAP-Rule:MF_03018, ECO:0000312   HGNC:HGNC:6381}
Function	Catalyzes the hydroxylation of L-kynurenine (L-Kyn) to form 3-hydroxy-L-kynurenine (L-3OHKyn) (PubMed: <a href="#">23575632</a> , PubMed: <a href="#">26752518</a> , PubMed: <a href="#">28604669</a> , PubMed: <a href="#">29208702</a> , PubMed: <a href="#">29429898</a> ). Required for synthesis of quinolinic acid, a neurotoxic NMDA receptor antagonist and potential endogenous inhibitor of NMDA receptor signaling in axonal targeting, synaptogenesis and apoptosis during brain development. Quinolinic acid may also affect NMDA receptor signaling in pancreatic beta cells, osteoblasts, myocardial cells, and the gastrointestinal tract (Probable).
Cellular Location	Mitochondrion outer membrane {ECO:0000255   HAMAP- Rule:MF_03018,

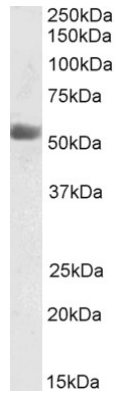
ECO:0000269|PubMed:9237672}; Multi-pass membrane protein  
{ECO:0000255|HAMAP-Rule:MF\_03018, ECO:0000269|PubMed:9237672}

## Tissue Location

Highest levels in placenta and liver. Detectable in kidney.

## Images

---



AF4303a (0.03 µg/ml) staining of Human Placenta lysate (35 µg protein in RIPA buffer). Primary incubation was 1 hour. Detected by chemiluminescence.

Please note: All products are 'FOR RESEARCH USE ONLY. NOT FOR USE IN DIAGNOSTIC OR THERAPEUTIC PROCEDURES'.