

Goat Anti-LILRA4 Antibody (C Terminus)

Catalog # AF4307a

Product Information

Application	WB, E
Primary Accession	P59901
Other Accession	NP_036408.3 , 23547
Reactivity	Human
Predicted	Human
Host	Goat
Isotype	IgG
Calculated MW	55181

Additional Information

Gene ID	23547
Other Names	Leukocyte immunoglobulin-like receptor subfamily A member 4, CD85 antigen-like family member G, Immunoglobulin-like transcript 7, ILT-7, CD85g, LILRA4, ILT7
Dilution	WB~~1:1000 E~~N/A
Storage	Maintain refrigerated at 2-8°C for up to 6 months. For long term storage store at -20°C in small aliquots to prevent freeze-thaw cycles.
Precautions	Goat Anti-LILRA4 Antibody (C Terminus) is for research use only and not for use in diagnostic or therapeutic procedures.

Protein Information

Name	LILRA4 (HGNC:15503)
Function	Functions coreceptor to limit the innate immune responses to viral infections; signaling occurs via FCER1G (PubMed: 16735691 , PubMed: 19564354). Down-regulates the production of IFNA1, IFNA2, IFNA4, IFNB1 and TNF by plasmacytoid dendritic cells that have been exposed to influenza virus or cytidine-phosphate-guanosine (CpG) dinucleotides, indicating it functions as a negative regulator of TLR7 and TLR9 signaling cascades (PubMed: 16735691 , PubMed: 19564354 , PubMed: 24586760). Down-regulates interferon production in response to interaction with BST2 on HIV-1 infected cells (PubMed: 26172439). Activates a signaling cascade in complex with FCER1G that results in phosphorylation of Src family and Syk kinases and thereby triggers mobilization of intracellular Ca(2+) (PubMed: 16735691 , PubMed: 19564354). Does not interfere with the differentiation of plasmacytoid dendritic cells into antigen-presenting cells

(PubMed:[24586760](#)).

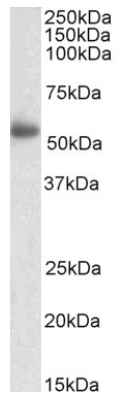
Cellular Location

Cell membrane; Single-pass type I membrane protein

Tissue Location

Detected on plasmacytoid dendritic cells (at protein level). Detected on plasmacytoid dendritic cells, but not on monocytes or B cells.

Images



AF4307a (2 µg/ml) staining of Human Spleen lysate (35 µg protein in RIPA buffer). Primary incubation was 1 hour. Detected by chemiluminescence.

Please note: All products are 'FOR RESEARCH USE ONLY. NOT FOR USE IN DIAGNOSTIC OR THERAPEUTIC PROCEDURES'.