

Goat Anti-ATF1 Antibody (N Terminus)

Purified Goat Polyclonal Antibody

Catalog # AF4316a

Product Information

Application	WB, E
Primary Accession	P18846
Other Accession	NP_005162.1 , 466
Reactivity	Human
Host	Goat
Clonality	Polyclonal
Calculated MW	29233

Additional Information

Gene ID	466
Other Names	ATF1; activating transcription factor 1; EWS-ATF1; FUS/ATF-1; TREB36; cAMP-dependent transcription factor ATF-1; cyclic AMP-dependent transcription factor ATF-1
Dilution	WB~~1:1000 E~~N/A
Format	Supplied at 0.5 mg/ml in Tris saline, 0.02% sodium azide, pH7.3 with 0.5% bovine serum albumin. Aliquot and store at -20°C. Minimize freezing and thawing.
Immunogen	Peptide with sequence EDSHKSTTSETAPQ-C, from the N Terminus of the protein sequence according to NP_005162.1.
Storage	Maintain refrigerated at 2-8°C for up to 6 months. For long term storage store at -20°C in small aliquots to prevent freeze-thaw cycles.
Precautions	Goat Anti-ATF1 Antibody (N Terminus) is for research use only and not for use in diagnostic or therapeutic procedures.

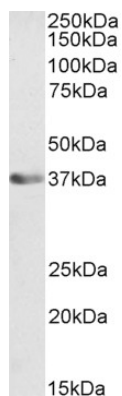
Protein Information

Name	ATF1
Function	This protein binds the cAMP response element (CRE) (consensus: 5'-GTGACGT[AC][AG]-3'), a sequence present in many viral and cellular promoters. Binds to the Tax-responsive element (TRE) of HTLV-I. Mediates PKA-induced stimulation of CRE-reporter genes. Represses the expression of FTH1 and other antioxidant detoxification genes. Triggers cell proliferation and transformation.

References

Huang GL, Guo HQ, Yang F, Liu OF, Li BB, Liu XY, Lu Y, He ZW.

Images



AF4316a (0.1 µg/ml) staining of A431 nuclear cell lysate (35 µg protein in RIPA buffer). Primary incubation was 1 hour. Detected by chemiluminescence.

Please note: All products are 'FOR RESEARCH USE ONLY. NOT FOR USE IN DIAGNOSTIC OR THERAPEUTIC PROCEDURES'.