

# Goat Anti-KATNAL2 Antibody (internal region)

Purified Goat Polyclonal Antibody

Catalog # AF4320a

## Product Information

---

Application	WB, E
Primary Accession	<a href="#">Q8IYT4</a>
Other Accession	<a href="#">NP_112593.2</a> , <a href="#">83473</a>
Reactivity	Human
Host	Goat
Clonality	Polyclonal
Calculated MW	61253

## Additional Information

---

Gene ID	83473
Other Names	KATNAL2; katanin p60 subunit A-like 2; katanin p60 ATPase-containing subunit A-like 2; p60 katanin-like 2
Dilution	WB~~1:1000 E~~N/A
Format	Supplied at 0.5 mg/ml in Tris saline, 0.02% sodium azide, pH7.3 with 0.5% bovine serum albumin. Aliquot and store at -20°C. Minimize freezing and thawing.
Immunogen	Peptide with sequence C-TGDTKSLNKEHPNQE, from the internal region of the protein sequence according to NP_112593.2.
Storage	Maintain refrigerated at 2-8°C for up to 6 months. For long term storage store at -20°C in small aliquots to prevent freeze-thaw cycles.
Precautions	Goat Anti-KATNAL2 Antibody (internal region) is for research use only and not for use in diagnostic or therapeutic procedures.

## Protein Information

---

Name	KATNAL2 {ECO:0000255 HAMAP-Rule:MF_03025}
Function	Severs microtubules in vitro in an ATP-dependent manner. This activity may promote rapid reorganization of cellular microtubule arrays.
Cellular Location	Cytoplasm, cytoskeleton {ECO:0000255 HAMAP-Rule:MF_03025}. Cytoplasm. Cytoplasm, cytoskeleton, spindle. Cytoplasm, cytoskeleton, spindle pole Note=Localizes within the cytoplasm, partially overlapping with microtubules in interphase and to the mitotic spindle and spindle poles during mitosis.

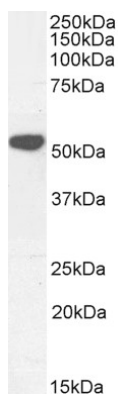
## References

---

Neale BM, Kou Y, Liu L, Ma'ayan A, Samocha KE, Sabo A, Lin CF, Stevens C, Wang LS, Makarov V, Polak P, Yoon S, Maguire J, Crawford EL, Campbell NG, Geller ET, Valladares O, Schafer C, Liu H, Zhao T, Cai G, Lihm J, Dannenfelser R, Jabado O, Peralta Z, Naga

## Images

---



AF4320a (0.3 µg/ml) staining of Human Testes lysate (35 µg protein in RIPA buffer). Primary incubation was 1 hour. Detected by chemiluminescence.

Please note: All products are 'FOR RESEARCH USE ONLY. NOT FOR USE IN DIAGNOSTIC OR THERAPEUTIC PROCEDURES'.