

# Goat Anti-COMT (internal), Biotinylated Antibody

Peptide-affinity purified goat antibody

Catalog # AF4325a

## Product Information

---

<b>Application</b>	WB, E
<b>Primary Accession</b>	<a href="#">P21964</a>
<b>Other Accession</b>	<a href="#">NP_000745.1</a> , <a href="#">NP_009294.1</a>
<b>Reactivity</b>	Human
<b>Predicted</b>	Human
<b>Host</b>	Goat
<b>Clonality</b>	Polyclonal
<b>Isotype</b>	IgG
<b>Calculated MW</b>	30037

## Additional Information

---

<b>Gene ID</b>	1312
<b>Other Names</b>	Catechol O-methyltransferase, 2.1.1.6, COMT
<b>Dilution</b>	WB~~1:1000 E~~N/A
<b>Format</b>	0.5 mg/ml in Tris saline, 0.02% sodium azide, pH7.3 with 0.5% bovine serum albumin.
<b>Immunogen</b>	Peptide with sequence CQDIIPQLKKKYDVD., from the internal region of the protein sequence according to NP_000745.1; NP_009294.1.
<b>Storage</b>	Maintain refrigerated at 2-8°C for up to 6 months. For long term storage store at -20°C in small aliquots to prevent freeze-thaw cycles.
<b>Precautions</b>	Goat Anti-COMT (internal), Biotinylated Antibody is for research use only and not for use in diagnostic or therapeutic procedures.

## Protein Information

---

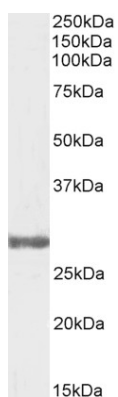
<b>Name</b>	COMT ( <a href="#">HGNC:2228</a> )
<b>Function</b>	Catalyzes the O-methylation, and thereby the inactivation, of catecholamine neurotransmitters and catechol hormones. Also shortens the biological half-lives of certain neuroactive drugs, like L-DOPA, alpha-methyl DOPA and isoproterenol.
<b>Cellular Location</b>	[Isoform Soluble]: Cytoplasm

**Tissue Location**

Brain, liver, placenta, lymphocytes and erythrocytes

**Images**

---



Biotinylated AF4325a (0.3 µg/ml) staining of Testis lysate (35 µg protein in RIPA buffer). Detected by chemiluminescence.

Please note: All products are 'FOR RESEARCH USE ONLY. NOT FOR USE IN DIAGNOSTIC OR THERAPEUTIC PROCEDURES'.