

Goat Anti-IRF4 (aa393-407) Antibody

Peptide-affinity purified goat antibody

Catalog # AF4335a

Product Information

Application	WB, IHC, FC, Pep-ELISA
Primary Accession	Q15306
Other Accession	NP_002451.2 , NP_001182215.1
Reactivity	Human, Rat
Host	Goat
Clonality	Polyclonal
Clone Names	IRF4
Calculated MW	51772

Additional Information

Gene ID	3662
Other Names	interferon regulatory factor 4, LSIRF, multiple myeloma oncogene 1, MUM1, IRF4
Dilution	WB~~1:1000 IHC~~1:100~500 FC~~1:10~50 Pep-ELISA~~N/A
Format	Supplied at 0.5 mg/ml in Tris saline, 0.02% sodium azide, pH7.3 with 0.5% bovine serum albumin.
Immunogen	Peptide with sequence C-DPQRQRKLITAHVEP, from the internal region (near C Terminus) of the protein sequence according to NP_002451.2; NP_001182215.1.
Storage	Maintain refrigerated at 2-8°C for up to 6 months. For long term storage store at -20°C in small aliquots to prevent freeze-thaw cycles.
Precautions	Goat Anti-IRF4 (aa393-407) Antibody is for research use only and not for use in diagnostic or therapeutic procedures.

Protein Information

Name	IRF4 {ECO:0000303 PubMed:15489334, ECO:0000303 PubMed:8921401}
Function	Transcriptional activator. Binds to the interferon-stimulated response element (ISRE) of the MHC class I promoter. Binds the immunoglobulin lambda light chain enhancer, together with PU.1. Probably plays a role in ISRE-targeted signal transduction mechanisms specific to lymphoid cells. Involved in CD8(+) dendritic cell differentiation by forming a complex with the BATF-JUNB heterodimer in immune cells, leading to recognition of AICE

sequence (5'-TGAnTCA/GAAA- 3'), an immune-specific regulatory element, followed by cooperative binding of BATF and IRF4 and activation of genes.

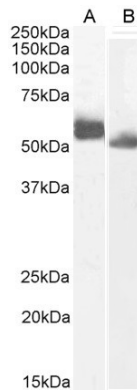
Cellular Location

Nucleus. Cytoplasm

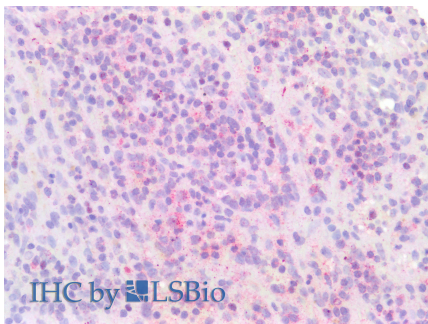
Tissue Location

Lymphoid cells.

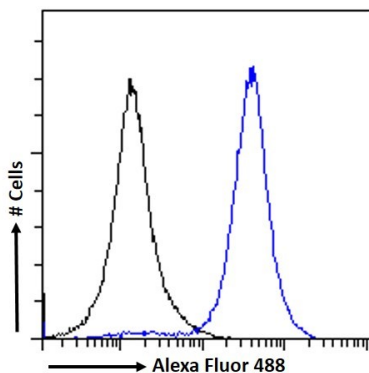
Images



AF4335a (0.3 µg/ml) staining of Human (A) and (0.1ug/ml) Rat (B) Spleen lysate (35 µg protein in RIPA buffer).



AF4335a (5 µg/ml) staining of paraformaldehyde fixed Human Spleen. Steamed antigen retrieval with citrate buffer pH 6, AP-staining.



AF4335a Flow cytometric analysis of paraformaldehyde fixed A431 cells (blue line), permeabilized with 0.5% Triton. Primary incubation 1hr (10ug/ml) followed by Alexa Fluor 488 secondary antibody (1ug/ml). IgG control: Unimmunized goat IgG (black line) fo

Please note: All products are 'FOR RESEARCH USE ONLY. NOT FOR USE IN DIAGNOSTIC OR THERAPEUTIC PROCEDURES'.