

Goat anti-CTGF Antibody

Peptide-affinity purified goat antibody

Catalog # AF4501a

Product Information

Application	IF, FC, Pep-ELISA
Primary Accession	P29279
Other Accession	NP_001892.1
Reactivity	Human, Mouse, Rat, Pig, Dog, Bovine
Host	Goat
Clonality	Polyclonal
Clone Names	CCN2
Calculated MW	38091

Additional Information

Gene ID	1490
Other Names	CTGF; connective tissue growth factor; CCN2; HCS24; IGFBP8; MGC102839; NOV2; CCN family member 2; IBP-8; IGF-binding protein 8; IGFBP-8; OTTHUMP00000017213; hypertrophic chondrocyte-specific protein 24; insulin-like growth factor-binding protein 8
Dilution	IF~~1:50~200 FC~~1:10~50 Pep-ELISA~~N/A
Format	Supplied at 0.5 mg/ml in Tris saline, 0.02% sodium azide, pH7.3 with 0.5% bovine serum albumin. Aliquot and store at -20°C. Minimize freezing and thawing.
Immunogen	Immunizing peptide overlaps disulphide bond
Storage	Maintain refrigerated at 2-8°C for up to 6 months. For long term storage store at -20°C in small aliquots to prevent freeze-thaw cycles.
Precautions	Goat anti-CTGF Antibody is for research use only and not for use in diagnostic or therapeutic procedures.

Protein Information

Name	CCN2 (HGNC:2500)
Function	Major connective tissue mitogen secreted by vascular endothelial cells. Promotes proliferation and differentiation of chondrocytes. Is involved in the stimulation of osteoblast differentiation and has a critical role in osteogenesis (PubMed: 39414788). Mediates heparin- and divalent cation-dependent cell adhesion in many cell types including fibroblasts,

myofibroblasts, endothelial and epithelial cells. Enhances fibroblast growth factor- induced DNA synthesis.

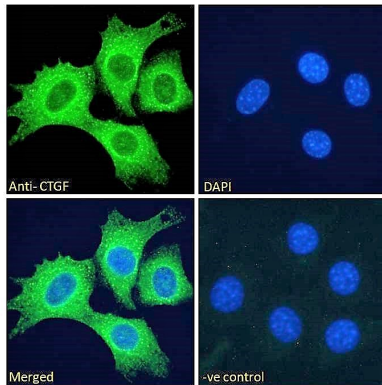
Cellular Location

Secreted, extracellular space, extracellular matrix
{ECO:0000250|UniProtKB:P29268}. Secreted

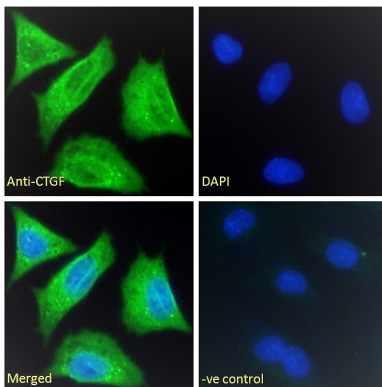
Tissue Location

Expressed in bone marrow and thymic cells. Also expressed one of two Wilms tumors tested.

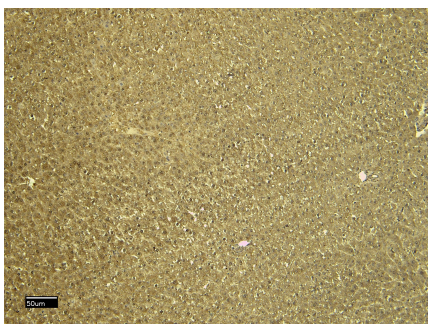
Images



EB11760 Immunofluorescence analysis of paraformaldehyde fixed NIH3T3 cells, permeabilized with 0.15% Triton. Primary incubation 1hr (10ug/ml) followed by Alexa Fluor 488 secondary antibody (2ug/ml), showing cytoplasmic/membrane staining. The nuclear stain is DAPI (blue). Negative control: Unimmunized goat IgG (10ug/ml) followed by Alexa Fluor 488 secondary antibody (2ug/ml).

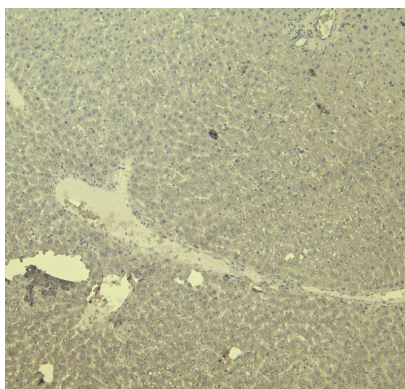


EB11760 Immunofluorescence analysis of paraformaldehyde fixed HepG2 cells, permeabilized with 0.15% Triton. Primary incubation 1hr (10ug/ml) followed by Alexa Fluor 488 secondary antibody (2ug/ml), showing cytoplasmic/membrane staining. The nuclear stain is DAPI (blue). Negative control: Unimmunized goat IgG (10ug/ml) followed by Alexa Fluor 488 secondary antibody (2ug/ml).



EB11760 (6µg/ml) staining of paraffin embedded Rat Liver. Heat induced antigen retrieval with citrate buffer pH 6, HRP-staining.

EB11760 Negative Control showing staining of paraffin embedded Rat Liver, with no primary antibody.



Please note: All products are 'FOR RESEARCH USE ONLY. NOT FOR USE IN DIAGNOSTIC OR THERAPEUTIC PROCEDURES'.